

CentraCare Health 2014 Annual Report



CentraCare CEO to retire

Pladson has had job since 1995



Terry Pladson

CentraCare Health's vision of safety, service and value, Pladson said in a statement. Gene Windfeldt, chair of the CentraCare Health Board of Directors, said Pladson "has been an inspiration to the board and through his commitment to the entire organization, to improve the health of every patient every day." He has been the right person at the right time for the CentraCare organization.

CentraCare also operates specialty services such as the CentraCare Heart & Vascular Center, Coborn Cancer Center and the CentraCare Kidney Program.

Pladson began his work in St. Cloud with Internal Medicine Associates as a pulmonologist in 1978.

CentraCare Health's vision of safety, service and value, Pladson said in a statement. Gene Windfeldt, chair of the CentraCare Health Board of Directors, said Pladson "has been an inspiration to the board and through his commitment to the entire organization, to improve the health of every patient every day." He has been the right person at the right time for the CentraCare organization.

CentraCare employees give back for campaign

The employees at CentraCare Health-Long Prairie recently wrapped up the annual Employee Giving Campaign, which benefits programs supported by the CentraCare Health Foundation.

More than 460 employees participated in the 250 employee campaign on June 5.

The employees celebrated the highest percentage of participation. More than \$23,000 was raised for the Employee Campaign in Long Prairie this year.

The employees celebrated the highest percentage of participation. More than \$23,000 was raised for the Employee Campaign in Long Prairie this year.

CentraCare on new helicopter



St. Cloud Hospital's OB Triage Unit opens

The center is in the 10-story addition to the hospital that was part of a \$223 million expansion that began in 2007. It is part of the hospital's Women and Children's Center, which also includes Pediatrics and the Neonatal Intensive Care Unit (NICU).

Registered Nurse Melissa Lahn shows off one of six private rooms in the new OB Triage Unit. A separate waiting room provides additional space for each patient and family.

Six private rooms provide dedicated space for each patient and family.

CentraCare gets grant

Gohman, who couldn't think of five new ways to add value to the community, said the grant will help CentraCare improve patient care.

CentraCare Health facility locations

Core Values

Patient Centered: Serving patients above all.

Integrity: Adhering to honest and ethical practices.

Collaboration: Working jointly with others to improve health and health care.

Compassion: Serving all who seek our care with kindness, dignity and respect.

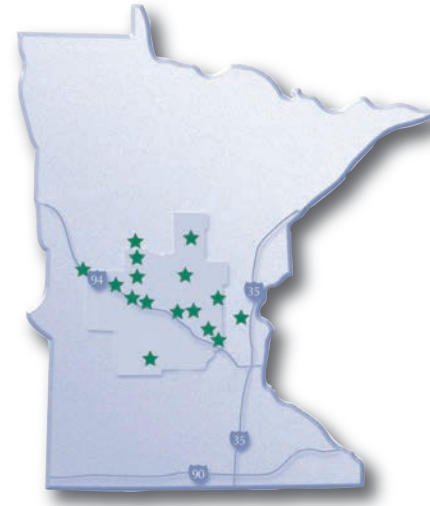
Stewardship: Ensuring responsible use of all resources to best serve our communities.

Mission

CentraCare Health works to improve the health of every patient, every day.

Vision

CentraCare Health will be the leader in Minnesota for quality, safety, service and value.



Alexandria - dialysis, radiation oncology

Becker - clinic, pharmacy

Belgrade - clinic

Big Lake - clinic, dialysis

Brainerd - dialysis

Cambridge - dialysis

Cold Spring - clinic

Eagle Bend - clinic

Eden Valley - clinic

Litchfield - dialysis

Little Falls - dialysis

Long Prairie - hospital, clinic, long-term care

Melrose - hospital, clinic, senior housing, long-term care

Monticello - hospital, clinic, senior housing, long-term care

Paynesville - hospital, clinic, senior housing, long-term care

Princeton - dialysis

Richmond - clinic

Sauk Centre - hospital, clinic, senior housing, long-term care

Staples - dialysis

St. Cloud - hospital, clinic, dialysis, pharmacy,
senior housing, long-term care

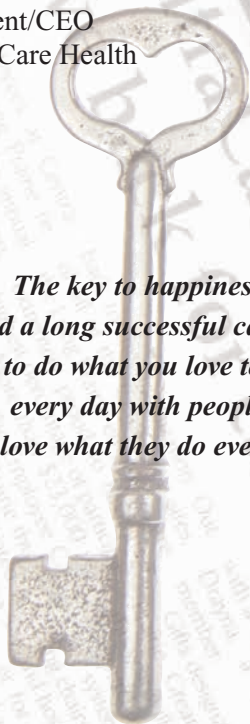
St. Joseph - clinic

Retiring president values collaboration



Terry Pladson, MD, MBA, FACPE
President/CEO
CentraCare Health

*The key to happiness
and a long successful career
is to do what you love to do
every day with people
who love what they do every day.*



It has been a joy and privilege to practice medicine in the St. Cloud community — and I am proud to end my career at the end of 2014 as the chief executive officer of CentraCare Health.

I joined the St. Cloud Hospital medical staff in 1975, moonlighting in the emergency room while I was an Internal Medicine resident in training at the University of Minnesota.

After I completed a Fellowship in Pulmonary Disease in 1978, my wife, Sue, and I and our two daughters moved back to St. Cloud to be close to family and friends as we both had graduated from Tech High School. I joined Tom Luby, MD. Our practice grew from two to six physicians and then merged with the St. Cloud Internists in 1985 to form the St. Cloud Clinic of Internal Medicine. My medical practice included Internal Medicine, Pulmonary Disease and Critical Care Medicine. I was the president of the St. Cloud Clinic of Internal Medicine from 1990-95. Our clinic merged with St. Cloud Hospital to form CentraCare Health System in 1995.

I began my career in management with an initial half-time commitment to the role of CentraCare Clinic president and CentraCare Health System co-president along with John Frobenius, who was the St. Cloud Hospital president and CentraCare Health System co-president. Our organization grew substantially over the next seven and one-half years and by the time John retired in December 2002, I had stopped clinical practice. I became the sole president and CEO of CentraCare Health System.

Since its formation, CentraCare has valued collaboration. We have looked for opportunities to partner with regional clinics, hospitals and long-term care facilities. We have formed many joint ventures and expanded clinical programs well into the 12 counties surrounding St. Cloud.

I have been honored to work with great physicians, executives, staff and volunteers, including the community members who serve on our boards of directors. No important decision or strategic initiative has been accomplished without strong support from the many talented, intelligent and dedicated people throughout our organization.

I know that I will miss the people with whom I have worked, most notably my former patients. I wish all of Central Minnesota health and prosperity in the years ahead.

Thank you.

A handwritten signature in black ink that reads "Terry Pladson". The signature is fluid and cursive, written in a professional style.

Terry Pladson, MD, MBA, FACPE
President/CEO
CentraCare Health



David Tilstra, MD
CentraCare Clinic President

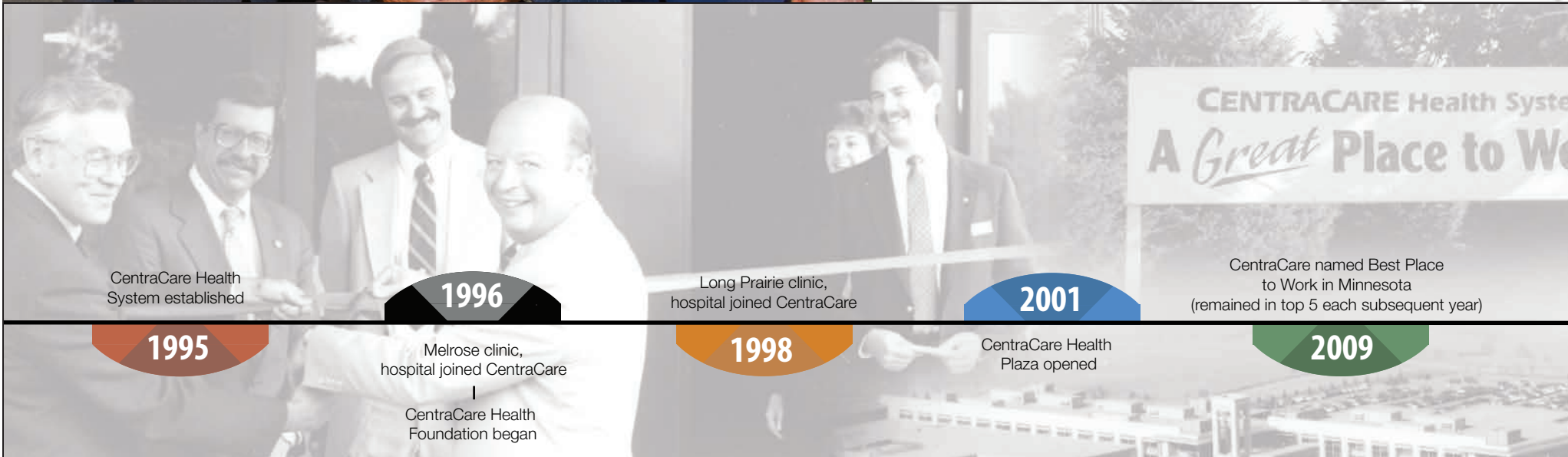
Terry Pladson, MD, MBA, FACPE
President/CEO
CentraCare Health

Craig Broman, MHA, FACHE
CentraCare Hospitals President

Growth. Challenges. Change.

These three words come to mind as we reflect on fiscal year 2014 and the whirlwind of activity in the first few months of fiscal year 2015.

Paynesville Area Health Care System joined CentraCare Health, bringing five clinics, one hospital, a long-term care facility, senior housing — and more than 360 employees — into the CentraCare family. We opened the CentraCare Urgency Center, launched CentraCare *eClinic*, started a Tele-Stroke program and recruited 35 physicians to the communities we serve. We have increased our focus on community wellness and named Janet Handrigan, MD, as medical director for health and wellness. We remodeled and reopened CentraCare Health – Monticello’s Birth Center, opened a new Endoscopy unit at St. Cloud Hospital, opened the Washburne Court assisted living apartments in Paynesville — and announced plans to build a resort-style senior living campus in Sartell.



1995
CentraCare Health System established

1996
Melrose clinic, hospital joined CentraCare
CentraCare Health Foundation began

1998
Long Prairie clinic, hospital joined CentraCare

2001
CentraCare Health Plaza opened

2009
CentraCare named Best Place to Work in Minnesota (remained in top 5 each subsequent year)

Employees and providers have:

- collaborated on numerous quality improvement projects
- improved the patient experience
- implemented \$11.5 million worth of cost-saving initiatives
- integrated a variety of support services across all CentraCare sites

CentraCare Health has nimbly adapted to the challenges of the ever-changing United States health care system. We have begun developing “Population Health” systems that will enable us to address the needs of specific groups of patients.

And there were a couple of major announcements: the upcoming retirement of CentraCare Health President Terry Pladson, MD, and the selection of his successor, Kenneth Holmen, MD, who will start in January 2015.

We salute Dr. Pladson for his unflagging commitment to patients, his strong support of employees, physicians and volunteers, and his leadership.

CentraCare Health is striving to be the leader in Minnesota for quality, safety, service and value. That’s a tall order. But we’re up to the challenge — because you and your families deserve the best!



Craig Broman, MHA, FACHE
CentraCare Hospitals President



David Tilstra, MD
CentraCare Clinic President



2011

Sauk Centre's
Lakeview Clinic
joined CentraCare

St. Michael's Hospital,
Sauk Centre, joined CentraCare

2012

New River Medical Center,
Monticello, joined CentraCare
|
Paynesville Area Health Care System
joined CentraCare

2013

CEO Terry Pladson, MD
announced retirement
|
CentraCare named successor,
Kenneth Holmen, MD

2014



David (left) and Baron Van Heel are grateful for the life-saving care David received after suffering cardiac arrest on Jan. 1, 2014.

David and Baron and their custom-made "Manhattan." The Van Heel duo stretched a TransAm body three feet with fiberglass. "There's not much left of the TransAm," David said. "There's the engine and the dash, but the trunk hinges are Jaguar, and the flying lady is Cadillac. Ain't another like her."

A new year, a revived heart

CentraCare Health – Melrose hailed the new year in a big way. Before the sun rose on Jan. 1, 2014, hospital staff snatched Grey Eagle native David Van Heel, 67, from the grips of prolonged cardiac arrest.

Baron Van Heel, 21, raced his dad to the Melrose hospital citing heart pains. After an EKG indicated a heart attack, staff called the Life Link III helicopter to transport David to St. Cloud Hospital.

“They were calling ahead to the cath lab in St. Cloud when suddenly Dad just fell over backward, and his face went white. And he...well, he died then,” Baron said. “I screamed for help, and the nurses came running in and started CPR immediately, put oxygen on him, used the defibrillator a few times, everything.”

After 35 minutes of manual compressions, Melrose Certified Nurse Practitioner Sheila Wing approached Baron with a disconcerting prognosis. The chances of a comeback were slim, she said, and even then, severe brain damage was nearly certain.

“I just told them to keep trying. If there’s any chance at all, don’t stop,” Baron said. “I was not ready to be without a dad. I don’t want to know what it’s like without him anytime soon.”

When the helicopter arrived, they hooked David up to the LUCAS™2 Chest Compression System which applies chest compressions according to the latest scientific guidelines. Studies have shown that the mechanically controlled LUCAS™2 compressions are able to sustain a higher blood flow to the brain and heart compared with manual compressions.



CentraCare Health is one of the partners for Life Link III helicopters, which provide high quality of critical care while transporting patients.

After 54 minutes of CPR, David’s heart resumed the fight. Within a matter of minutes, the Life Link helicopter was bound for the CentraCare Heart & Vascular Center catheterization lab at St. Cloud Hospital.

A 100 percent artery blockage prompted Cardiologist Bernard Erickson, MD, CentraCare Clinic, to insert a single stent — not far from the two that were inserted 13 years prior. David is a four-time heart attack survivor.

David was moved to the Cardiac Care Unit where he was put into a medically induced coma to preserve brain function. Staff then administered therapeutic hypothermia, cooling David’s body to 92.3 degrees for 24 hours and rewarming him over a 12-hour period.

Cardiac arrests often take a devastating toll on motor and cognitive function, but one day after David regained consciousness, staff inspired hope that David would regain the ability to walk unassisted.

“I barely knew what was going on, but I walked 50 or 500 feet — I can’t remember. We blew the doctors’ minds — they couldn’t believe I was walking.”

David spent January and early February at St. Cloud Hospital with Baron at his bedside. During that time, David required kidney dialysis and became fast friends with Nephrologist Alexander Schad, MD, CentraCare Clinic – River Campus. “That Dr. Schad. What a great personality. He doesn’t use the big words or anything like that,” David said. “I could razz him a little bit.”

After going home in February, David continued his outpatient dialysis treatments three times a week at CentraCare Kidney Program – Alexandria Dialysis.

“Those nurses in Alexandria were something special,” David said. “They jumped up and down for you, and some of them would clap their hands for you saying, ‘We’re prayin’ for you! You’re gonna get out of here!’ Like family.”

Few cardiac arrest patients make a complete recovery after more than 30 minutes spent unconscious, but David’s heart, brain and kidneys sustained no apparent damage — an exceptionally rare outcome. The Van Heels do not take this unlikely gift for granted.

“Those nurses in Melrose are small, but they are strong” David said. “They broke all of my ribs except one with the CPR. I’m so grateful they did because I’m still here.”

CentraCare Health Financials

CentraCare Health Statement of Operations

Total Revenue
Total Expenses
Operating Income
Operating Margin

Fiscal Year Ended 30-Jun-2014

\$1,052,146,765
1,007,899,145
44,247,620
4.21%

Fiscal Year Ended 30-Jun-2013

\$938,148,434
891,011,309
47,137,125
5.02%

Annual Capital Expenditures

\$65,909,035

\$73,439,577

CentraCare Health Balance Sheet

Current Assets
Investments
Property & Equipment, net
Other Assets
Total Assets

30-Jun-2014

\$286,069,328
529,661,374
610,832,498
24,159,626
\$1,450,722,826

30-Jun-2013

\$269,438,703
444,179,833
587,546,615
22,945,578
\$1,324,110,729

Current Liabilities
Long-Term Debt
Other Liabilities
Net Assets
Total Liabilities & Net Assets

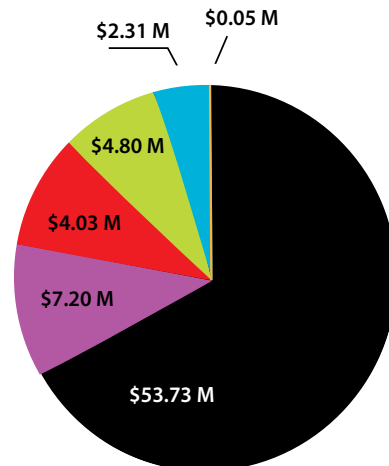
\$148,938,697
413,091,152
75,171,270
813,521,707
\$1,450,722,826

\$139,166,858
415,964,609
73,973,755
695,005,507
\$1,324,110,729

Serving our communities

Fiscal year ended June 30, 2014.

Current year calculations are based on IRS 990 schedule H instructions.



- Medicaid¹ & other public programs
- Charity Care¹
- Subsidized Health Services
- Education/Research
- Cash & In-kind
- Other Community Benefit

\$ Values in Millions

¹Losses Based on Costs

Total: \$72.13 million

Additional Community Benefit² (in millions)

Cost in excess of Medicare payments
\$56.69
Other care provided without compensation
\$18.60
Discounts offered to uninsured patients
\$ 7.45
Taxes & Fees
\$ 2.12
Total \$84.86

² not included on schedule H

CentraCare Health Foundation Financials

Thank you to everyone who generously supports health and health care in Central Minnesota. The following lists of benefactors highlight the thousands of people in our region whose gifts are impacting the care of patients today, leaving a legacy of future health improvements.

Thank you for making a difference!

Summary of Operations

FY 2014

Revenue & Support (in thousands)

*Contributions, net	\$7,748
Investment Income, net	\$4,553
Special Events	\$1,039
**Planned Giving Expectations	\$373

Total Revenue

\$13,713

Expenses (in thousands)

Grants & Programs	\$7,119
Special Events	\$489
Administrative	\$714
Fundraising	\$1,180

Total Expenses

\$9,502

Net Assets at the end of the year

\$47,635

* St. Cloud Hospital and St. Benedict's Senior Community covered a portion of the Foundation's administrative expenses.

The number is reflected in the contribution line.

** Some planned gifts are revocable and may not materialize.

Cumulative Benefactors

The persons, foundations and corporations listed have achieved a lifetime-giving level of \$10,000 or more. We truly are grateful to our benefactors and make every effort to list them as they prefer. Please call 320-240-2810 to correct any errors or discrepancies that appear in the following lists. (As of June 30, 2014)

\$2,000,000+

CentraCare Health Employees
The Coborn Family
Ms. Mae Ellingson-Skalicky
Benedict F. & Dorothy J. Gorecki
St. Cloud Hospital
St. Cloud Hospital Volunteer Auxiliary
John & Mary Weitzel



The Bernick Family Foundation gave \$25,000 for the purchase of a climbing wall for the Recovery Plus Adolescent Residential treatment facility and Clara's House.

\$1,000,000+

Anderson Family of Companies
Clearway Minnesota
Bob & Linda Feuling
& The Feuling Family
Grocers On the Green
George & Shirley Torrey

\$750,000+

Darwin Bonn
Douglas J. & Tanya Boser —
Boser Construction, Inc.

\$500,000+

Rollie & Barbara A. Anderson
Blue Cross and Blue Shield
of Minnesota
William E. Clemens
Crothall Services Group
Bob & Nancy Ferche Family
Barb & Art Grachek
Morgan Family Foundation
Otto Bremer Foundation
Bob & Sandy Sexton
State of Minnesota
Dr. Wesley J. & Jean A. Streed
Gene & Sheelah Windfeldt

\$250,000+

Bernick Family Foundation
Scott & Kim Blattner
Design Electric, Inc.
Andy & Jodi Fritz —
El-Jay Plumbing & Heating, Inc.
Lester Engel
John & Nancy Frobenius
Harold E. Anderson Trust
Al & Yvonne Kremers
Patrick E. Lynch
John Mahowald & Donna Kuhl
Mahowald Insurance Agency
& Mahowald Financial Partners
Marco, Inc.
Gary & Jane Marsden
Dr. John K. & Joyce Matsuura
John & Cherie McDowall —
McDowall Company
McGough Construction Company, Inc.
Medica Foundation

Dr. Terence & Sue Pladson
The Clara Foundation
Patrick J. & Karen L. Virnig
Wells Fargo Bank
Dennis & Karen Zaun

\$100,000+

American Heritage Bank
& the Jay Johnston
& Rodger Johnston families
Barb Anderson
& Jeanette (†) Anderson
Cornelius P. & Sandra L. Baldwin
Michael & Sharon Bauerly Family Fund
Bauerly Companies
Rodger & Marlys Bense
Dick & Mimi Bitzan
Bremer Bank
Central Minnesota
Emergency Physicians
CliftonLarsonAllen
Donlar Construction
Dr. Paul J. & Joanne Dorsher
Roger & Betty Duinick
Epic Systems
Jared Gapinski & Molly Meagher
GNP Company — Gold'n Plump
Gray Plant Mooty
Leo T. Henkemeyer
Emily Hoeft Estate
Hughes Mathews Greer, P.A.
Jim Christensen —
J.C. Christensen & Associates, Inc.
Dr. Dwight E. & Audrey C. Jaeger
Sy & Corrine Janochoski —
Sy & Sons, Inc.
Knife River/MDU Foundation
Leighton Broadcasting Radio Stations
KCLD, KZPK, KCML, KNSI
Cheryl Lightle & Wade Skaja
Gordy & Michelle Meyer
Jim & Marion Miller

Dan & Susan Miller —
Miller Architects & Builders
Minnesota Organization on
Fetal Alcohol Syndrome
Dr. Paul T. & Nancy E. Moran
Multiple Concepts Interiors Carpet One
Regional Diagnostic Radiology
Barry & Sandy Ross
Phil & Evelyn Ruggiero
Leo M. & Karen M. Sand
Tom & Joyce Schlough
Ronald S. & Irene E. Schmidt
SEI
Christopher Shorba
Sprint PCS
St. Cloud Hospital Auxiliary Gift Gallery
St. Cloud Lions Club
St. Jude Medical
Tastefully Simple
Jerome & Esther Then
Delphine (†)
& John Undersander Family
US Bank
Faber Family — Viking Coca-Cola,
First Choice, Armada Coffee
Bob & Penny White
Diane & John (†) Wojtanowicz/
Prairie Farm Company
Wolters Kluwer Financial Services

\$75,000+

Gail Anderson
Appert's Foodservice
Vonnie Bangtson
Craig & Karen Broman
The Carlson Family
and C & L Distributing
Carl & Barb Caspers
Child Care Choices, Inc.
Crystal Farms
Fraternal Order of Eagles
Greater MN Fight for a Cure

Donald Helgeson & Sue Shepard
 Kevin J. & Joanne M. Hughes
 Ray Hughes
 Kemps
 William A. & Virginia M. Lee
 Thomas E. & Mary Mathews
 Pan-O-Gold Baking Co.
 Dr. Nicholas & Bernice Reuter
 Denny & Karol Ringsmuth
 Russ Davis Wholesale
 Sisters of the Order of Saint Benedict
 St. Cloud Ear Nose & Throat —
 Head & Neck Clinic, PA
 The Lynn Johnson Family Foundation
 Louise E. Theisen
 Then Family Charitable Foundation
 Don & Sylvia Weeres & Family —
 Spee-Dee Delivery Service, Inc.

\$50,000+

Array Services Group
 John, Nancy, Corey & Lee Bartlett —
 Automotive Parts Headquarters, Inc.
 George Brancato
 Charles D. Nielsen & Peggy L. Carlson
 John P. & Cindy B. Clemens
 Robert & Veronica Coborn Family Fund
 Coldspring
 Courier Investments LLC
 Creative Memories/
 The Antioch Company
 DeZurik
 Mark & Karla Donlin Family Fund
 Charles & Jane Dooley
 The Eich Family & Eich Motor Company
 Dr. Walter N. & Trecia A. Ellis
 Michael J. Faber
 Rose Ann Faber
 Form A Feed Inc.
 Ross Hall & Tanya Vossberg
 Judge Elizabeth Hayden
 & Judge Charles Flinn, Jr.

HealthPartners
 Central Minnesota Clinics
 Dennis & Tamara Holland
 Allen & Laura Horn
 Mary Lee & James H. Illies
 J & B Group
 J.P. Morgan Securities, Inc.
 Mary Lou Jameson
 Jennie-O Turkey Store, Inc.
 Drs. Richard & Merryn R. Jolkovsky
 Karen & Jerry Jurgens
 Donlar Construction Company
 Linus J. & Marina A. Koopmeiners
 Lamar Outdoor Advertising
 Steven Letnes
 Hub Levandowski & Karol Moorman
 John P. & Maryanne Mahowald
 Steve & Trese Mareck
 Metropolitan Mechanical
 Contractors, Inc.
 Minnesota Academy
 of Pediatrics Foundation
 Dr. Chris & Denise Moellentine
 Jim Nahan
 Michael R. & Donna M. Nathe
 Ben & Kari Nemeth
 New Flyer USA
 Robert & Marilyn Obermiller
 PCL Construction Services, Inc.
 Rice Building Systems, Inc.
 Rinke-Noonan Law Firm
 Mike & Elizabeth Roth
 Scheels All Sports
 Michael & Patricia Sipe
 Stearns Benton Medical Society
 Don & Angeline Hall Family
 Supervalu Inc.
 Kathy & Tom Terhaar
 The Hearst Foundations
 Tony & Joyce Tillemans
 Drs. David & Janet Tilstra
 TKI/Tom & Diane Kraemer Family

Traumen Glasberg Design Studios
 Vascular Solutions
 Gary & Wendy Verkinnes
 Walgreens Infusion Services
 Brad & Kathy Wheelock
 Dr. Daniel & Judy Whitlock
 Duane & Elaine Schultz
 & Winkelman Building Corporation

\$25,000+

Janie & Jack M. Amundson
 Dr. Charles & Janet Andres
 Anheuser-Busch
 Audio Video Extremes LLC
 David & Jean Bauerly Family
 Jerry & Elaine Bauerly
 Don & Pat (†) Bitzan
 Payton Blomstrom Perinatal
 & Pediatrics Palliative Care Fund
 Dr. Joseph M. & Patty Blonski
 Blue Cross Blue Shield
 Boston Scientific Foundation
 Tom & Andrea Brasel
 Bremer Financial Services Inc.
 Dr. Frank T. & Alice L. Brown
 Center For Diagnostic Imaging
 Central Minnesota Noon Optimist Club
 Linda & Joe Chmielewski
 Clearwater Travel Plaza
 Mark Coborn
 Continental Press, Inc.

Crafts Direct
 Dr. & Mrs. Stephen Cragle
 Mick Family — Custom Welding
 & Metal Fabricating, Inc.
 D.J. Bitzan Jewelers
 Jim & Jan Davis
 DCI, Inc.
 Dr. and Mrs. Luther & Julianne Dehnel
 Del Monte Foods
 Gerry (†) & Colleen Donlin
 Dunham Associates
 Dr. Frederic J. & Lynn Engman
 Dr. Jason M. & Debra Erickson
 Events Extraordinaire
 By Jean Inc./Jean Dotzler
 Drs. Daniel & Debra Ferraro
 Fifth District Eagles
 Finken Water & Kay's Kitchen
 Christy Gilleland —
 Gilleland Chevrolet-Cadillac
 Patricia R. Gray
 James & Pauline Hall
 Hammel, Green and Abrahamson, Inc.
 Lee & Jan Hanson
 Drs. Ronald D. & Michelle Hanson
 Paul & Jennifer Harris
 Dr. Richard W. & Patricia Hart
 Richard & Kris Inderieden —
 Heater Rental Services
 Joe & Amy Hellie
 Jerry & Kathryn Henkemeyer
 Henkemeyer Coatings Inc.
 Mike & Pat Henkemeyer
 Steve & Megan Henkemeyer —
 Henkemeyer Excavating
 Joan Hicks
 Andy (†) & Carol Hilger
 Holiday Companies
 Holiday Inn Hotel & Suites
 Holiday Station Stores Inc.
 Dr. Mark D. Holm & Susan Osaki Holm
 Ken & Beth Honkomp



Karla Reil, a breast cancer survivor, participates in a clinical trial made possible by generous donors to the Coborn Cancer Center.

Nicholas & Terese Houle
 Dr. Scot & Gretchen Hutton
 Alcuin & Dorine (†) Illies
 Jagielski Family
 Kathy Janson Memorial Fund
 JM Companies, Inc. & Mike Moores
 Dr. James L. & Mary Jost
 Justin V. Pearson Memorial Fund
 Kevin & Julie Johnson —
 K. Johnson Const. Inc.
 Michael & Joni Karl
 Kiwanis Club of St. Cloud
 The Klick Foundation
 Susan & Greg Klugherz
 Tom (†) & Helen Krebsbach
 Dr. David A. & Susan M. Kroska
 Laerdal Foundation
 Lakeland Construction Finance, LLC
 Mark & Judi Larkin
 Jim & Mary Jane Lauerman
 Aaron & Jill Levin
 Dr. Douglas R. & Taimi T. Liepert
 Dr. James & Vicki Lundeen
 Macy's
 Dr. Todd & Sarah Magnuson
 Norie Mahowald
 Mardag Foundation
 Edward "Chip" Martin & William Chaffee
 Mathew Hall Lumber Company
 Dr. Mark & Ronda Matthias
 Scott & Mary Kay May
 Drs. Eric T. & Lynn M. McFarling
 Medtronic
 Dr. Cindy Jensen Melloy
 & Thomas P. Melloy
 Michael Foods
 Midsota Plastic
 & Reconstructive Surgeons, PA
 Midwest Arrhythmia Research Fund
 Myrel A. Neumann
 Midwest Vision Centers
 Minnesota Medical Foundation

Rosie & Roger Moran
 Morrison Healthcare Food Services
 Steve Muggli
 Mark & Jan Murphy
 NativeX
 Negen Family — Negen Architects, Inc.
 Dr. Robert B. & Marianne Nemeth
 Joshua & Melissa Longnecker —
 Northwestern Mutual
 John & Elizabeth Packert/
 Ron's Cabinets
 Kathy & Jim Parsons
 Paynesville Hospital Auxiliary
 Perkins & Will
 David & Mary Phipps
 Plaza Park Bank
 Pleasureland RV Center, Inc.
 Pope Architects, Inc.
 Tom & Amy Porwoll
 Durand J. & Mary Sue Potter



Darwin Bonn and Carl Caspers enjoyed themselves at the 10th annual Spring Fling which raised \$75,000 to enhance the lives of residents at St. Benedict's Senior Community in St. Cloud.

Quinlivan & Hughes, P.A.
 Joni & Duane Rasmusson
 RBC Wealth Management
 Dr. John R. & Kathryn A. Reisinger
 Robert & Rita Rengel
 Dr. David J. & Susan M. Roberts
 Scenic Sign Corp.
 Claude C. & Mary A. Schneider
 Dr. Thomas G. & Myra Lee Schrup

Jacqueline M. Schuh
 in memory of Joan M. Schuh
 John Seckinger
 Tom & Kathy Sellnow
 Slumberland Furniture of St. Cloud
 Dr. Stephen (†) & Mary Sommers
 St. Cloud Hospital School of Nursing
 Alumni Association
 St. Cloud Surgical Center
 Stinson Leonard Street LLP
 Scott & Shelly Streed
 Todd & Heidi Streed
 Dr. Muhammad Suri & Aqsa Nadeem
 Dr. Jessica & Andy Swartout
 The Medtronic Foundation
 Thermo-Tech Windows
 East Side Glass Company
 Lee & Mary Torborg
 Mark J. Traut
 Dr. Theodore & Andrea Truitt
 Joan B. Volkmuth
 W. Gohman Construction Co.
 Donald R. & Jan D. Watkins
 Hugo & Rita Weyrens
 Dr. Darin D. & Katy Willardsen
 Dr. Bernard & Michelle Williams
 Williams Dingmann Funeral Homes
 Brownie and Michelle Williams
 Dr. Harold E. & Shirley Windschittl
 Xcel Energy
 Dr. Mohamed S. Yassin
 Todd & Kyoko Zaun
 Zonta Club of St. Cloud

\$10,000+

The Ackley Family
 Adult & Pediatric Urology
 Advantage Sales & Marketing
 AIS Planning
 Dr. Oluade A. & Adeyoola A. Ajayi
 Albany Mutual Telephone Foundation
 Hani Alkhatib

Tom & Sally Allen
 American Cancer Society
 American Endowment Foundation
 American Pharmacists Association
 Barb Anderson & Dave Chandler
 Drs. Stacia Anderson
 & Matthew R. Hwang
 John & Kay Delinsky
 & Apollo Insurance Agency
 Arctic Glacier Ice
 Arvig Communication Systems
 Ascent
 Larry L. Asplin
 AVI SPL
 Dr. Richard & Michaela Backes
 Dr. Burt & Evelyn Bancroft
 BankVista
 Barnes & Noble Booksellers
 Barrel O' Fun
 Roberta & Kevin Basol
 Patrick C. Bauer
 & Gloria A. Flavin Bauer
 Brian & Marge Bauerly
 Jenny Bauerly
 Mark & Anita Bauerly
 Rick & Helga Bauerly
 Bayer Built Woodworks, Inc.
 Penny & Dennis Beattie
 Gary & Kay Bechtold
 Mary Bell
 Carol Belling
 Michael S. & Gerry Beltinck
 Eileen A. Bergeron
 Dean R. & Lori J. Bernick
 Big Stone County
 Cancer Support Group, Inc.
 Kirstie & Peter Bingham
 Ryan & Julia Bjerke
 Byron & PegAnne Bjorklund Family
 Drs. Barbara J. & Steven H. Bollinger
 Bonnie & Stephen Bologna
 Bor-Son Construction, Inc.

Sharon & David Borgert
 Dr. Philip F. & Kristine Boyle
 Joe & Kathy Sexton
 Dr. Bryan J. & Kirsten H. Brindley
 Mary Buhl
 Barbara & David Burandt
 Laura Burns
 Bush Foundation
 Mary Bye
 Roger & Sue Cada
 Care Transportation
 Caribou Coffee
 Dr. Dennis & Jeanne Carreras
 Carson Pirie Scott Foundation
 Central Minnesota Credit Union
 Central Minnesota
 Woodcarvers Association
 Certified Hereford Beef
 City of St. Cloud
 College of Saint Benedict
 Dr. Thomas & Paulette Como
 Adeline Conlon
 Dee Coppock
 Dr. Thomas L. & Mary M. Cress
 Pat Cumming
 Craig & Lynn Dahl
 Dahlheimer Beverage, LLC
 Daniel Funeral Home, Inc.
 Dr. Eileen H. & Brian H. Dauer
 Dayton Foundation
 Dwayne & Cindy Dockendorf
 Linda Doerr
 Larry & Rita Donlin
 Donlin Company
 Dr. & Mrs. Michael J. Dorle
 Dr. Craig M. & Jennifer Doschadis
 Jyeton Drayna
 Dr. Ann C. Dunnigan
 Drs. Robert Ang & Belen Dy
 Eden Valley Lions Club
 Edy's Grand Ice Cream
 Dr. Charles Ehlen

Mike & Deb Eisenstadt
 Dr. Rene Eldidy
 Elmer Garding Memorial Cancer Fund
 Energizer c/o Advantage Sales
 & Marketing
 Janice & Charles Engebretson
 Dr. Hans H. & Sharon L. Engman
 Wayne R. & Linda J. Engstrand
 Robert & Evelyn Erickson
 Perry Evans
 Fairview Gardens
 John & Gail Falconer
 Dr. Kelly B. & Neil Fandel
 Farmers & Merchants State Bank,
 Sauk Rapids/Pierz
 Jason & Jennifer Ferche
 Dr. Michael C. & Kendra Flanagan
 Jim Forsting
 Freeport State Bank
 Frito Lay
 G.R. Herberger's, Inc.
 Bernard J. Gambrino
 Gannett National Shared Service Ctr
 Dr. John H. & Jeanne M. Geiser
 General Mills Foundation
 General Mills, Inc.
 Drs. Terri T. & Jeffrey S. Gerdes
 Granite Equity Partners Fund
 Great River Federal Credit Union
 Doug & Kay Greenlee
 Dr. Albert S. & Janice Hammond
 Paul N. & Michele Hanson
 Sally & Harley Hanson
 Drs. Chad A. & Sheri Haroldson
 Mark Hauge
 Kacey Hiltner
 Dr. Kathleen Hobday
 Hormel Foods
 Drs. Weining Hu & Yi Zheng
 Brenda & Matt Hulst
 Imagine Nation Books, LTD
 Ingram Entertainment Inc.

Initiative Foundation
 Dan Janochoski
 Jim Janochoski
 Mr. & Mrs. Tom Janochoski
 John Morrell & Co.
 Dr. Craig M. & LuAnne Johnson
 Cindy Johnson
 Bob & Judy Johnson
 Angela Jordahl
 Angelica Jurgens
 Dr. Donald J. Jurgens
 Terry & Barbara Kantor
 Dr. Barbi Kaplan-Frenkel
 & Theodor Frenkel
 Dale Kaufman
 Drs. Mary & Jerry Keating
 Dr. Robert J. & Joanne Keck
 Kehe Food Distributors, Inc.
 Keller Family Community Foundation
 June Kelly
 Kern DeWenter Viere, Ltd.
 Karen Kinsley
 James M. & Janet Knoblach
 Luan Knoll
 Larry & Brenda Knutson
 Kopp Family Foundation
 Kopp Investment Advisors
 Dr. Todd M. & Laura Kor
 Naomi Kowalik
 Kraft Foods
 Mark Krebsbach



Dan and Mabel Coborn received the Lifetime Achievement Award at the La Gratitude event for their generous support and volunteer involvement with CentraCare Health.

Rebecca Kulzer
 Greg & Carla Kummer
 Dr. John M. & Nancy Lacika
 William J. & Phyllis M. Lacroix
 Jerry & Bev Timmers Lahr
 Dr. Patrick M. & Debra S. Lalley
 Patricia & Henri Lanctin
 Peggy Lange
 David & Camilla Larson
 Dr. Theresa M. & John Lau
 Marie Laudon
 Dr. Elaine Lee
 Yvonne L. Leedahl
 John & Arlene Leisen
 Dr. Thomas W. & Deanne Leither
 Scott & Lori Leonard
 Mary & Michael Leyk
 Dr. David R. & Gretchen Lindgren
 Shirley & Al (†) Loehr
 Phil & Holly Luitjens
 Lumber One, Avon Inc.
 Kathleen Mahon & John M. Teskey
 Marjorie & Gerald Mahon
 Jim & Chris Mahowald
 Robert & Anne Mahowald
 Samuel G. & JoAnn M. Mairs
 Diane L. Marcotte
 Marigold Foods Inc.
 Nancy & Erich Martens
 Dr. Creston M. & Bonnie Martin
 Dr. Mark J. & Lisa B. Martone
 Melrose Lions Club
 Merrill Corporation
 John Meyer
 Roy J. & Ruth Meyer
 MHA
 Mid Central Door Co.
 Mid-America Coffee Service/
 Ronnoco Coffee
 Alvina Mies
 Bob & Deb Miller
 MillerCoors

Dr. Simon & Renee Milstein
André Mitchell
Roger A. & Barbara L. Moshier
Mr. Dee's Inc.
Beverly Mueller
Tracy E. Napp, M.D.
Dr. Frank P. & Tracy Nellans
Dr. Peter E. & Laurie Nelson
Joe & Veronica Nessler
Bruce & Carolyn Neubauer
Hoang Nguyen, M.D.
and Regional Diagnostic Radiology
Eleanor Hemstreet Nickles
& William Nickles
Northwestern Mutual
NXC Imaging
O'Hara's Brew Pub & Restaurant
Old Dutch Foods Inc.
Troy & Gail Olson
Gerry & Carole Otto
Kurt & Linda Otto
Overhead Door of St. Cloud, Inc.
Judith M. Ozbun
Dr. Scott & Susan Palmer
Troy & Sandra Payne
Paynesville Lions Club
Drs. Ted & Jane Peterson
Dr. Brett A. & Jonathan Pinkerton
Joy & Patrick Plamann
Jean Poganski
Noel & Cindy Johnson —
Premier Real Estate
Prestige Parking & Valet
Shannon J. Quinlivan
Stephanie Randolph
Dr. Jodi K. Regan & Dean Moritz
Bret & Nicole Reuter
Dr. Nathaniel & Valerie Reuter
Millie Rice
Danya Rice
Richard N. Klein Living Trust
Aleen & Rick Roehl

Barbara Rogan
Deacon Kenneth W.
& Michele A. Roshia
Deacon Jerome Roth
Vickie & Al Ruegemer
Richard B. Ruhoff
Gregory O. & Carol J. Rupp
Saint Paul City Ballet
Vern Salzl
Juli & John Sanner
Thomas and Cheri Satre
Marilyn A. Savage
Scenic Specialties Landscape Center
Dr. Richard & Rita (†) Schaefer
Barb Scheiber
Jane Scherber
Armella Schimnich
James & Joan Schlenner —
Schlenner, Wenner & Co.
Judith C. Schmid
Mike Mavetz & Mary Beth Schmitt
Dr. John M. & Amy Schmitz
John & Jan Schnettler
David Schoenborn
Dr. Timothy N. & Amy Schuchard
SCR
Jeff Sell
Joe & Kathy Sexton
Ken & Marcia Shane
Joseph & Valerie Silva
Tereasa Simonson MD —
Regional Diagnostic Radiology
SJA Architects
Drs. Kevin Smith & Angelina Ausban
Snyder's of Hanover, Inc.
Joel & Jennifer Spalding
Drs. Kim & Chad Spaulding
Kevin & Anita Spellacy
Steve & Jean Sperl
St. Cloud Country Club
St. Cloud Medical Group
St. Cloud Medical Mission Fund

St. Cloud Orthopedic Associates, Ltd.
St. Cloud Sertoma Club
St. Cloud Technical
& Community College
St. Cloud Westside Sertoma Club
St. Cloud Window Inc.
Bert & Karen Stanley
State Farm Insurance
Dr. Michael & Nina Steil
Paul W. Steil & Elizabeth Wenner Steil
Todd & Cindy Steinke
Mary Stiles, MD
Dr. Robert Stocker
& Dr. Catherine Matuska
Laurie & Robert Strack
Strack Companies
Streed Family LMTD Partnership
Terry & Dr. Janelle K. Strom
Mary Struffert
Stryker
Debra D. & Donald H. Stueve
Dr. Pradub & Rampai Sukhum
Dr. Read & Tammy Sulik
Drs. Dale J. Minnerath
& Sylvia R. Sundberg
Sunray Printing Solutions, Inc.
Mary Super
Supervalu Foundation
Daniel Swenson
Dr. Kevin & Linda Switzer
Take Heart America Sudden
Cardiac Arrest Survival Initiative
TDS
Toni & Bryan Tebben
Larry D. (†) & Margo A. Tepley
The Catholic Foundation —
Diocese of St. Cloud
The Change Companies
The JM Smucker Company
The Smile Train
The St. Cloud Morning Optimist Club
Joleen & John Thell

Dr. Tracey B. Thompson
Kelly Thomson
Robert & Joann Thueringer
Dr. Daniel J. & Julie S. Tiede
Cathy & Brad Tieva
Times Media & St. Cloud Times
Townsquare Media, Inc.
Traut Wells
Trudeau Distributing
Unilever
University of Minnesota
Urban Associates, Inc.
Dr. Paul E. Van Gorp
& Roberta M. Knutson
Kay & Philip VanderStoep
Amy & Roderick Vansurksun
Dr. Timothy G. & Valerie Vedder
Verizon
Verso Paper
Veterans of Foreign Wars
East Side Post 4847
Loren M. & Debra J. Viere
Joan & Steve M. Vincent, PhD
Jane Vortherms
Shar Wallack
Patrick & Gwen Wampach
Shirley Ann Wampach
Christine Warzecha
Dr. Dove D. & Tracey L. Watkin
Bruce & Jodie Gohmann —
Weidner Plumbing & Heating
Janet & Tim Wensman
West Central Anesthesia PC
Margaret & Michael White
William and Betty Andres Foundation
Greg & Beth Windfeldt
Judith & Tom Wyne
Edward J. Zapp
Daryl L. & Bonnie G. Zimmer
Peggy Zimmer
Steve & Sonja Zitur
Deceased (†)

Beacon Society

The following benefactors have named St. Cloud Hospital programs and services, St. Benedict's Senior Community or CentraCare Health Foundation as a partial beneficiary in their estates. (As of June 30, 2014)

Hani Alkhatib
Tom & Sally Allen
Larry L. Asplin
Ernest J.(†) & Eileen A. Bergeron
Jason Bernick
Dick & Mimi Bitzan
Douglas J. & Tanya Boser —
Boser Construction, Inc.
Larry J. & Dawn C. Caswell
Dan & Mabel Coborn
Adeline L. Conlon
Lester Engel
Dr. Hans H. & Sharon L. Engman
Wayne R. & Linda J. Engstrand
Eugene & Jan Faulhaber
Judge Elizabeth Hayden
& Judge Charles Flinn, Jr.
John & Nancy Frobenius



The Doug and Tanya Boser family established an estate gift with CentraCare Health Foundation which will benefit a variety of areas including the Neonatal Intensive Care Unit at St. Cloud Hospital.

Jared Gapinski & Molly Meagher
Benedict F. & Dorothy J. Gorecki
Barb & Art Grachek
Joan Groth
Ross Hall & Tanya Vossberg

Brad & Lisa Hanson
Jack & Geri Happe
John & Mary Herges
Joan Hicks
Dennis & Tamara Holland
Alcuin & Dorine (†) Illies
Dr. Dwight E. & Audrey Jaeger
Jagielski Family
Drs. Richard & Merryn R. Jolkovsky
Roger & Susan Justison
Linus & Marina Koopmeiners
Naomi Kowalik
Tom (†) & Helen Krebsbach
Al & Yvonne Kremers
Kevin & Ann Krenik
William & Virginia Lee
Steven Letnes
Dr. Douglas R. & Taimi T. Liepert
Elaine & Lloyd (†) Luckman
Norie Mahowald
Diane L. Marcotte
Gary & Jane Marsden
Scott & Mary Kay May
Terry McCaffrey
Dr. Cindy Jensen Melloy
& Thomas P. Melloy
Dr. Chris K. & Denise Moellentine
Dr. Paul T. & Nancy E. Moran
Rosie & Roger Moran
Roger A. & Barbara L. Moshier
Eleanor Hemstreet Nickles
& William Nickles
Charles D. Nielsen & Peggy L. Carlson
Robert & Marilyn Obermiller
Judith M. Ozbun
Dr. Greg & Ellen Pelletier
Kris Peterson & Sue Haller
Dr. Terence & Sue Pladson
Daniel Purcell
Dr. Nicholas & Bernice Reuter
Denny & Karol Ringsmuth
Chad & Paula Roggeman

Phil & Evelyn Ruggiero
Richard B. Ruhoff
Gregory O. & Carol J. Rupp
Marilyn A. Savage
Tom & Joyce Schlough
Jacqueline M. Schuh
in memory of Joan M. Schuh
Marjorie Schwartz
Connie Schwinghammer
Bob & Sandy Sexton
Christopher Shorba
Michael & Patricia Sipe
Todd & Cindy Steinke
Dr. Wesley J. & Jean A. Streed
M.J. & Richard Swanson
Louise E. Theisen
George B. & Shirley J. Torrey
Arlene Truszinski Clement
John & Mary Weitzel
Hugo B. & Rita M. Weyrens
Brad & Kathy Wheelock
Diane M. & John J. (†) Wojtanowicz
7 Anonymous Members

Deceased (†)

Named Funds

The following endowment funds have been created by individuals to carry on family names or to honor special physicians, caregivers or friends. The principal of these gifts is invested and the interest is used to support the area designated by the benefactor. (As of June 30, 2014)

Al & Yvonne Kremers Fund
Al Kremers Fund
Alcuin & Dorine Illies Fund
Almeda Ella Pollish Fund
Anna & Gracie Fund
Arthur F. & Barbara A. Grachek Fund

Aunt Leona Fund
Barb Caspers Fund
Bernie Belling Recovery Fund
Bill & Jean Kane Fund
Bill & Virginia Lee Fund
Boser Family Fund
Broker Family Fund
Carl & Marilyn Savage Fund
Celestine & Mary Lieser Fund
Chris Shorba Fund
Clara's Fund
Craig & Lynn Dahl Fund
Darwin & Rose Mary Bonn Fund
Dr. Fred & Lynn Engman Fund
Dr. Gerald L. & Karen Jurgens
Cancer Survivorship Fund
Dr. Hans Engman Diabetes Fund
Dr. Harold E. Windschitl
Cancer Research
Dr. Jessica & Andy Swartout Fund
Dr. Joseph & Patty Blonski Family Fund
Dr. Nicholas & Bernice Reuter Fund
Dr. Philip Halenbeck Education
Dr. Richard & Patricia Hart Fund
Dr. Robert Cumming Family Practice
Elizabeth Hayden
& Charles Flinn, Jr. Fund
Fabian & Donna Eickhoff Family Fund



Phil Ruggiero, active volunteer and auxiliary president, and his wife, Evelyn, started a volunteer scholarship fund for young people to pursue an education beyond high school.

Fred & Del Sexton Fund
Fred M. Riegger Fund

Gene & Sheelah Windfeldt Fund
 George & Shirley Torrey Fund
 George J. McDowall Memorial Fund
 Greater MN Fight for a Cure Fund
 Hank & Dee Coppock Fund
 Harold & Carole Groustra Cancer Fund
 Helen Liljedahl Fund
 Herman Hollar
 Memorial Scholarship Fund
 Hind Site Fund
 Irene Walsh Fund
 Jagielski Family Fund
 Jake & Mary Essen
 Alzheimer's Education Fund
 James & Helen Nahan Family Fund
 James and Marion Miller Fund
 Jean Kershner Lung Cancer Fund
 John & Delphine Undersander Fund
 John & Maryanne Mahowald Fund
 John & Nancy Frobenius
 Breast Cancer Fund
 Joseph J. & Susan M. Kuhl
 Heart Center Fund
 Karla & Mark Donlin Fund
 Kathy Janson Memorial Fund
 Kay Pattison Fund
 Kevin & Linda Switzer Fund
 Kidney Klimb Fund
 Knevel Family Fund
 Kristine Cunningham Rose
 Memorial Fund
 Lee & Mary Torborg Spiritual Care Fund
 Leonard and Catherine Horn Fund
 Liepert Family Fund
 Lillian's Garden Fund
 Louise E. Theisen Fund
 Madigan/Mosford Family Fund
 Marco Health Fund
 Mark D. Holm & Susie Osaki Holm
 Research Fund
 McDowall Company, John & Cherie
 McDowall Fund

Mike & Joni Karl Family Fund
 Nemeth Family Fund
 Nicholas & Terese Houle Fund
 Partners in the Art of Recovery Fund
 Pat Opatz Cancer Research
 Paul & Joanne Dorsher Fund
 Paul T. & Nancy E. Moran Fund
 Payton Blomstrom Perinatal
 & Pediatrics Palliative Care Fund
 Peggy L. Carlson — Charles D. Nielsen
 Hope Fund
 Quinlivan & Hughes Fund
 RDR Advised Fund
 Richard & Merryn R. Jolkovsky Fund
 Richard B. Ruhoff Fund
 Robert & Nancy Ferche Family Fund
 Robert & Sandy Sexton Fund
 Robert Mahowald Sr. Fund
 Rosalie Timmers
 Junior Volunteer Scholarship
 Rose Mary Bonn Garden Fund
 Ruggerio CentraCare Health Volunteer
 Scholarship Fund
 Sallie Engel
 Trauma Survivors' Education Fund
 Sam Ellis Fund
 St. Cloud Hospital School of Nursing
 Alumni Scholarship
 Sev & Ruth Koop Fund
 Streed Family Cleft & Craniofacial Fund
 Sue & Terry Pladson Fund
 Sy & Corrine Janochoski
 Donor Advised
 Wayne & Hazel Bonn Memorial Fund
 Weitzel Family Fund
 William J. Held Memorial Scholarship
 Wojtanowicz Family Fund
 Yvonne Obermiller Kremers
 Nursing Scholarship

Caduceus Society
A philanthropic guild of CentraCare Health Foundation open to Central Minnesota practicing and retired medical staff who make a gift to support the Foundation's mission of improving health and health care. Members achieve active standing by contributing to the CentraCare Health Foundation Caduceus Society during the current calendar year. Legacy standing is achieved once a Caduceus Society member has cumulatively given \$10,000 or more. (As of June 30, 2014)

Active Caduceus Members

Dr. Nelson L. & Charisse A. Adamson
 Dr. David Agerter
 Dr. Oluade A. & Adeyoola A. Ajayi
 Dr. Oluyemi A. Ajayi
 Drs. Stacia Anderson
 & Matthew Hwang
 Dr. Richard & Michaela Backes
 Dr. Frank & Jeanne M. Barnaby
 Dr. Joseph M. & Patty Blonski
 Dr. Stephen M. & Bonnie Bologna
 Dr. Jon C. & Barb Bowar
 Dr. Philip F. & Kristine Boyle
 Dr. Dennis & Jeanne Carreras
 Dr. & Mrs. Thomas H.
 & Paulette M. Como
 Tammi Congdon, MD
 Dr. Stephen P. & Beth Cragle
 Dr. Thomas L. & Mary M. Cress
 Dr. Thom Dahle
 Dr. Eileen H. & Brian H. Dauer
 Dr. Luther & Julianne Dehnel
 Dr. Jon Dennis
 & Sigrid Hedman-Dennis, RN, MSN
 Dr. Paul J. & Joanne Dorsher
 Dr. Craig M. & Jennifer Doschadis

Dr. Ann Dunnigan
 Dr. Marc A. & Teresa M. Dvoracek
 Dr. Rene & Milady Eldidy
 Dr. Walter N. & Trecia Ann Ellis
 Dr. Jason M. & Debra Erickson
 Dr. Mark A. & Sarah Erickson
 Dr. Sherrie Erickson-Birkedahl
 & Lawrence Birkedahl
 Dr. Kelly B. & Neil Fandel
 Dr. Michael C. & Kendra Flanagan
 Dr. Steven J. Fuglestad
 Dr. John H. & Jeanne M. Geiser
 Drs. Anthony Haas & Wendi Johnson
 Dr. Benedict Haeg
 Dr. Christopher Hagen
 Dr. Albert S. & Janice Hammond
 Drs. Ronald D. & Michelle Hanson
 Drs. Chad A. & Sheri Haroldson
 Dr. Richard W. & Patricia Hart
 Dr. Mark D. & Joanne C. Hauge
 Dr. Mark D. Holm & Susan Osaki Holm



Cardiologist Jamie Pelzel, MD, and team, care for more than 1,000 heart failure patients in Central Minnesota.

Dr. Kevin S. & Carol Holton
 Dr. Allen & Laura Horn
 Drs. Weining Hu & Yi Zheng
 Dr. Scot W. & Gretchen Hutton
 Dr. Dwight E. & Audrey C. Jaeger
 Drs. Richard & Merryn R. Jolkovsky
 Dr. James L. & Mary Jost
 Dr. Donald J. Jurgens

Dr. Barbi Kaplan-Frenkel
& Theodor Frenkel

Dr. Brian R. & Bonnie J. Kay

Drs. Jerome P. & Mary U. Keating

Dr. Robert J. & Joanne Keck

Dr. David A. & Susan M. Kroska

Dr. Patrick M. & Debra S. Lalley

Dr. Lanse C. & Livia Lang

Dr. Theresa M. & John Lau

Dr. Keith J. & Sheila Leavell

Dr. Thomas W. & Deanne Leither

Dr. Kurt R. & Cindy Lemke

Dr. David R. & Gretchen Lindgren

Dr. James W. & Vicki Lundeen

Dr. John Mahowald & Donna Kuhl

Dr. Edward "Chip" Martin
& William Chaffee

Dr. Mark J. & Lisa B. Martone

Dr. John & Joyce Matsuura

Dr. Mark & Ronda Matthias

Dr. Deborah L. McCarl

Drs. Eric T. & Lynn M. McFarling

Dr. Cindy Jensen Melloy
& Thomas P. Melloy

Drs. Dale J. Minnerath
& Sylvia R. Sundberg

Joel Miron, MD

Dr. André L. & Lakisha Mitchell

Dr. Chris & Denise Moellentine

Dr. Ravikanth Nathani
& Kanthi Yalamanchi

Dr. Peter E. & Laurie Nelson

Dr. Robert B. & Marianne Nemeth

Dr. Joseph P. & Veronica Nessler

Dr. Thomas J. & Elaine M. Newton

Drs. Hoang Nguyen & Nhan Quyen

Dr. Troy & Sandra Payne

Dr. Marilyn Peitso & Peder Hegland

Dr. Jamie M. & Jodi Pelzel

Drs. Theodore A. & Jane M. Peterson

Dr. Brett A. & Jonathan Pinkerton

Dr. Terence & Sue Pladson

Dr. Deborah Rasmussen
Steve & Chris Reichl

Dr. Nathaniel & Valerie Reuter

Dr. Nicholas & Bernice Reuter
Rieke Family

Dr. David J. & Susan M. Roberts
Jessie L.K. Roske MD

Dr. Thomas J. & Cheryl J.K. Satre

Dr. Gregory A. & Susan M. Schlosser
Melanie & Christian Schmidt

Dr. John M. & Amy Schmitz

Dr. Thomas G. & Myra Lee Schrup

Dr. Timothy N. & Amy Schuchard

Drs. Rachel L. Schuneman & Yang Lo
Todd & Lisa Severnak

Dr. Joel C. & Susan Shobe

Dr. J. Weston & Marilyn C. Smith

Drs. Kevin Smith & Angelina Ausban

Dr. Joel P. & Jenny Spalding

Drs. Robert E. Stocker
& Catherine A. Matuska

Dr. Thomas J. & Ann L. Stone

Dr. Fareed Suri & Aqsa Nadeem

Dr. Lola Sutherland & Duane Palm

Dr. Stephen Swenson

Dr. Kevin & Linda Switzer

Dr. John Teskey & Kathleen Mahon

Dr. Tracey B. Thompson

Drs. David & Janet Tilstra

Dr. Hilary & Lilyan Ufearo

Dr. Paul E. Van Gorp
& Roberta M. Knutson

Dr. Darin D. & Katy Willardsen

Dr. Thomas L. & Judith A. Wyne

Dr. Mohamed S. Yassin

Dr. Patrick & Penny Zook

7 Anonymous Benefactors

Legacy Caduceus Members

Dr. Oluade A. & Adeyoola A. Ajayi

Dr. Hani S. & Majedah Alkhatib

Drs. Stacia Anderson
& Matthew Hwang

Drs. Robert Ang & Belen Dy

Dr. Richard & Michaela Backes

Dr. Burton & Evelyn Bancroft

Dr. Joseph M. & Patty Blonski

Drs. Steven H. & Barbara J. Bollinger

Dr. Stephen M. & Bonnie Bologna

Dr. Jon C. & Barb Bowar

Dr. Philip F. & Kristine Boyle

Dr. Bryan J. & Kirsten H. Brindley

Dr. Frank T. & Alice L. Brown

Dr. Dennis & Jeanne Carreras

Dr. Thomas H. & Paulette M. Como

Dr. Stephen P. & Beth Cragle

Dr. Thomas L. & Mary M. Cress

Dr. Robert (†) & Patricia Cumming

Dr. Eileen H. & Brian H. Dauer

Dr. Luther & Julianne Dehnel

Dr. Michael J. & Roberta L. Dorle

Dr. Paul J. & Joanne Dorsher

Dr. Craig M. & Jennifer Doschadis

Dr. Ann Dunnigan

Dr. Charles Ehlen

Dr. Rene & Milady Eldidy

Dr. Walter N. & Trecia Ann Ellis

Dr. Frederic J. & Lynn Engman

Dr. Hans H. & Sharon L. Engman

Dr. Jason M. & Debra Erickson

Dr. Kelly B. & Neil Fandel

Drs. Daniel & Debra Ferraro

Dr. Michael C. & Kendra Flanagan

Dr. John H. & Jeanne M. Geiser

Drs. Jeffrey S. & Terri T. Gerdes

Dr. Albert S. & Janice Hammond

Drs. Ronald D. & Michelle Hanson

Drs. Chad A. & Sheri Haroldson

Dr. Richard W. & Patricia Hart

Dr. Mark D. & Joanne C. Hauge

Drs. H. Thomas (†) & Kathleen Hobday

Dr. Mark D. Holm & Susan Osaki Holm

Dr. Allen & Laura Horn

Drs. Weining Hu & Yi Zheng

Dr. Scot W. & Gretchen Hutton

Dr. Dwight E. & Audrey C. Jaeger

Dr. Craig M. & LuAnne Johnson

Drs. Richard & Merryn R. Jolkovsky

Dr. James L. & Mary Jost

Dr. Gerald L. & Karen Jurgens

Dr. Donald J. Jurgens

Dr. Barbi Kaplan-Frenkel
& Theodor Frenkel

Drs. Jerome P. & Mary U. Keating

Dr. Robert J. & Joanne Keck

Dr. James (†) & June Kelly



Family Medicine Physician Paul Van Gorp, MD, CentraCare Health – Long Prairie, won the 2014 Caduceus Award, which recognizes the outstanding work of Central Minnesota physicians who exhibit exceptional humanitarian medical efforts locally or around the world.

Dr. Todd M. & Laura Kor

Dr. David A. & Susan M. Kroska

Dr. John M. & Nancy Lacika

Dr. Patrick M. & Debra S. Lalley

Dr. Henri P. & Patricia Lanctin

Dr. Lanse C. & Livia Lang

Dr. Theresa M. & John Lau

Dr. Elaina Lee

Dr. Thomas W. & Deanne Leither

Dr. Douglas R. & Taimi T. Liepert

Dr. David R. & Gretchen Lindgren

Dr. James W. & Vicki Lundeen

Dr. Todd D. & Sarah Magnuson

Dr. John Mahowald & Donna Kuhl

Dr. Creston M. & Bonnie Martin

Dr. Edward "Chip" Martin
& William Chaffee

Dr. Mark J. & Lisa B. Martone

Dr. John & Joyce Matsuura

Dr. Mark & Ronda Matthias

Drs. Robert E. Stocker
& Catherine A. Matuska

Drs. Eric T. & Lynn M. McFarling

Dr. Cindy Jensen Melloy
& Thomas P. Melloy

Dr. Simon & Renee Milstein

Drs. Dale J. Minnerath
& Sylvia R. Sundberg

Dr. André L. & Lakisha Mitchell

Dr. Chris & Denise Moellentine

Dr. Paul T. & Nancy E. Moran

Dr. Tracy E. Napp

Dr. Frank P. & Tracy Nellans

Dr. Peter E. & Laurie Nelson

Dr. Joseph P. & Veronica Nessler

Drs. Hoang Nguyen & Nhan Quyen

Dr. Troy & Sandra Payne

Drs. Theodore A. & Jane M. Peterson

Dr. Brett A. & Jonathan Pinkerton

Dr. Terence & Sue Pladson

Dr. Jodi K. Regan & Dean Moritz

Dr. John R. & Kathryn A. Reisinger

Dr. Nicholas & Bernice Reuter

Dr. Nathaniel & Valerie Reuter

Dr. William (†) & Millie Rice

Dr. David J. & Susan M. Roberts

Dr. Thomas J. & Cheryl J.K. Satre

Dr. John M. & Amy Schmitz

Dr. Thomas G. & Myra Lee Schrup

Dr. Timothy N. & Amy Schuchard

Dr. Tereasa & Eric Simonson

Dr. David & Jill Smith

Drs. Kevin Smith & Angelina Ausban

Dr. Stephen (†) & Mary Sommers

Dr. Joel P. & Jenny Spalding

Drs. Kimberly Spaulding
& Chad Spaulding

Dr. Michael & Nina Steil

Dr. Mary A. Stiles

Dr. Wesley J. & Jean A. Streed

Dr. Janelle K. & Terry D. Strom

Dr. Pradub & Rampai Sukhum

Dr. Read & Tammy Sulik

Dr. Fareed Suri & Aqsa Nadeem

Dr. Jessica & Andy Swartout

Dr. Kevin & Linda Switzer

Dr. John Teskey & Kathleen Mahon

Dr. Tracey B. Thompson

Dr. Daniel J. & Julie S. Tiede

Drs. David & Janet Tilstra

Dr. Theodore O. & Andrea B. Truitt

Dr. Paul E. Van Gorp
& Roberta M. Knutson

Dr. Phillip H. & Kay VanderStoep

Dr. Roderick D. & Amy Vansurksum

Dr. Timothy G. & Valerie Vedder

Dr. Dove D. & Tracey L. Watkin

Dr. Daniel J. & Judy A. Whitlock

Dr. Darin D. & Katy Willardsen

Dr. Harold E. & Shirley Windschitl

Dr. Thomas L. & Judith A. Wyne

Dr. Mohamed S. Yassin

1 Anonymous Member

Deceased (†)

**Partners in Caring Society
Recognizes benefactors who made
annual gifts of \$1,000 or more to
CentraCare Health Foundation.
(As of June 30, 2014)**

The Ackley Family
Acosta
Adult & Pediatric Urology
Richard J. Ahles & Karen A. Ahles
Dr. Oluade A. & Adeyoola A. Ajayi
Tom & Sally Allen
Allergy & Asthma Associates, P.A.

American Endowment Foundation
American Heritage Bank
& the Jay Johnston
& Rodger Johnston families
American Pharmacists Association
Ameriprise Financial Employee Gift
Matching Program



CentraCare Health Foundation awarded a \$450,000 grant to the BLEND (Better Living: Exercise and Nutrition Daily) initiative that advocates for healthy communities giving children the opportunity to participate in daily physical activity and have access to nutritious foods.

Barb Anderson & Dave Chandler
Drs. Bradley & Julie K. Anderson
Anderson Family of Companies
Rollie & Barbara A. Anderson
Drs. Stacia Anderson
& Matthew R. Hwang
Lydia I. Andren
Dr. Charles & Janet Andres
Angushire Golf Club
John & Kay Delinsky
& Apollo Insurance Agency
Appert's Foodservice
Arctic Glacier Ice
Array Services Group
Arvig Communication Systems
Larry L. Asplin
At Home Apartments, LLC
Audio Video Extremes LLC
John, Nancy, Corey & Lee Bartlett —
Automotive Parts Headquarters, Inc.
Bette Bakke
Christine & Jason Bakke
Cornelius P. & Sandra L. Baldwin
Bame Foundation

Dr. Burton & Evelyn Bancroft
Vonnie Bangtson
BankVista
Lisa Baron
Joan B. Volkmuth
Roberta & Kevin Basol
Jerry & Elaine Bauerly
Michael & Sharon Bauerly Family Fund
Penny & Dennis Beattie
Gary & Kay Bechtold
Mary Bell
Rodger & Marlys Bense
Dean R. & Lori J. Bernick
Bernick Family Foundation
Jason Bernick
Linda Kay & Gregory C. Bethke
Kirstie & Peter Bingham
Dick & Mimi Bitzan
Ryan & Julia Bjerke
Byron & PegAnne Bjorklund Family
Blackberry Ridge Golf Club
Robert L. Blake
Scott & Kim Blattner
Rona Bleess
Dr. Joseph M. & Patty Blonski
Blue Cross and Blue Shield
of Minnesota
Darwin Bonn
Sharon & David Borgert
Douglas J. & Tanya Boser —
Boser Construction, Inc.
Dr. Jon C. & Barb Bowar
Thomas A. & Barbara J. Brand
Tom & Andrea Brasel
Breitbach Construction Co.
Bremer Bank
Bremer Financial Services Inc.
Brenny Transportation
Craig & Karen Broman
Dr. Frank T. & Alice L. Brown
Norma G. Brown
Larry & Cindy Brutger

Brutger Equities Inc.
 Bueckers City Sanitation, Inc.
 Bueckers Recycling Services, Inc.
 Laura Burns
 Troy & Lara Butner
 C & H Domino Sugar
 The Carlson Family and
 C & L Distributing
 C4 Welding
 Sheila E. Campbell
 Janna L. Cannon
 Caribou Coffee
 Charles D. Nielsen & Peggy L. Carlson
 Dr. Dennis & Jeanne Carreras
 Barclay G. & Janet Carriar
 Carl & Barb Caspers
 Central McGowan, Inc.
 Central Minnesota Community
 Foundation
 Central Minnesota Diagnostic, Inc.
 Central Minnesota Noon Optimist Club
 Central MN Poker
 Certified Hereford Beef
 Charity Cup Ride
 Chattem
 Chisago County Treasurer
 Linda & Joe Chmielewski
 Chobani
 James C. Christensen
 City of St. Cloud
 Clearwater Travel Plaza
 Clearway Minnesota
 John P. & Cindy B. Clemens
 William E. Clemens
 CliftonLarsonAllen
 Climate Air, Inc.
 Chris & Becky Coborn
 Dan & Mabel Coborn
 Mark Coborn
 Robert & Veronica Coborn Family Fund
 The Coborn Family
 Coldspring

College of Saint Benedict
 Dr. Thomas & Paulette Como
 Dr. Michael Contardo & Marilynn Olsen
 Crafts Direct
 Dr. & Mrs. Stephen Cragle
 Crossmark/Chicken of the Sea
 Crossmark/Reckitt Benckiser
 Crothall Services Group
 Crystal Farms
 Pat Cumming
 Mick Family — Custom Welding
 & Metal Fabricating, Inc.
 CVS Caremark Corporation
 D.J. Bitzan Jewelers
 Dahlheimer Beverage, LLC
 Daniel Funeral Home, Inc.
 Dr. Eileen H. & Brian H. Dauer
 Jim & Jan Davis
 DCI, Inc.
 Jennifer Dean Dwyer
 Dr. and Mrs. Luther & Julianne Dehnel
 Del Monte Foods
 Design Electric, Inc.
 DeZurik
 DLMC Foundation
 Dwayne & Cindy Dockendorf
 Linda Doerr
 Donlar Construction
 Gerry (+) & Colleen Donlin
 Mark & Karla Donlin Family Fund
 Paul & Joanne Dorsher
 Dr. Craig M. & Jennifer Doschadis
 Dunham Associates
 Dr. Ann C. Dunnigan
 Dr. Jacob & Sarah Dutcher
 Dr. Charles Ehlen
 The Eich Family & Eich Motor Company
 Mike & Deb Eisenstadt
 Dr. Rene Eldidy
 Andy & Jodi Fritz —
 El-Jay Plumbing & Heating, Inc.
 Joseph Ellerbusch

Ms. Mae Ellingson-Skalicky
 Dr. Walter N. & Trecia Ann Ellis
 Elmer Garding Memorial Cancer Fund
 Vicki & John Eisenpeter
 Energizer c/o Advantage
 Sales & Marketing
 Janice & Charles Engebretson
 Epic Systems
 Dr. Jason M. & Debra Erickson
 Perry Evans
 Events Extraordinaire
 By Jean Inc./Jean Dotzler
 Fairview Gardens
 Family Voices of Minnesota
 Dr. Kelly B. & Neil Fandel
 Faribault Foods
 Farmers & Merchants State Bank,
 Sauk Rapids/Pierz
 Farmland Foods
 Tom & Gina Feldhege
 Drs. Daniel & Debra Ferraro
 Finken Water & Kay's Kitchen
 Keith R. & Janet Finstad
 Dr. Michael C. & Kendra Flanagan
 Florida Natural Growers
 Deborah Folsom
 Jim Forsting
 Mark Frank
 Freeport State Bank
 Frito Lay

John & Nancy Frobenius
 George & Rose Funk
 Bernard J. Gambrino
 Gannett National Shared
 Service Center
 Jared Gapinski & Molly Meagher
 Gapinski Holdings Inc.
 GATR Volvo & GMC
 Chanda & Eric Gebhardt
 General Mills, Inc.
 Jodi Gertken
 Geyer Rental Service
 Christy Gilleland —
 Gilleland Chevrolet — Cadillac
 GNP Company — Gold'n Plump
 Benedict F. & Dorothy J. Gorecki
 Barb & Art Grachek
 Granite Equity Partners Fund
 Gray Plant Mooty
 Greater MN Fight For A Cure
 Doug & Kay Greenlee
 Greenwald Lions Club
 Grey Eagle — Burtrum Lions Club
 Chance & Teresa Haakonson
 Eileen & John Haas
 James & Pauline Hall
 Jason & Ann Hallonquist
 Marty & Jan Halvorson
 Hammel, Green and Abrahamson, Inc.
 Lee & Jan Hanson
 Roy A. & Laura Hanson
 Jack & Geri Happe
 Drs. Chad A. & Sheri Haroldson
 Angelyn Harper
 Lisa & Randy Harren
 Paul & Jennifer Harris
 Dr. Richard W. & Patricia Hart
 Mark Hauge
 Judge Elizabeth Hayden
 & Judge Charles Flinn, Jr.
 HealthPartners



Andy and Jodi Fritz, owners of El-Jay Plumbing & Heating, generously matched donations up to \$100,000 to benefit the Coborn Cancer Center.

HealthPartners
 Central Minnesota Clinics
 Heartland Glass
 Richard & Kris Inderieden —
 Heater Rental Services
 Joe & Amy Hellie
 Henkemeyer Coatings Inc.
 Mike & Pat Henkemeyer
 Kit & Jerry Henkemeyer
 Steve & Megan Henkemeyer —
 Henkemeyer Excavating
 Henkemeyer Landfill
 Ed & Bernadine Hennek
 Robert M. & Jennifer L. Hennen
 Henricksen for Human Care
 Kacey Hiltner
 Holdingford Walk of Hope
 Holiday Companies
 Richard & Jessica Hom
 Ken & Beth Honkomp
 Hormel Foods
 Allen & Laura Horn
 Nicholas & Terese Houle
 Drs. Weining Hu & Yi Zheng
 Ray Hughes
 Hughes Mathews Greer, P.A.
 Dr. Scot & Gretchen Hutton
 Susan L. & Bradley J. Imsdahl
 Initiative Foundation
 J & B Group
 Jim Christensen —
 J.C. Christensen & Associates, Inc.
 J.F. Kruse Jewelers
 J.R. Ferche Inc.
 Jacobs Financial
 Clayton & Christine Jacobson
 Mary Lou Jameson
 Dan Janochoski
 Jim Janochoski
 Mr. & Mrs. Tom Janochoski
 Kathy Janson Memorial Fund
 Debra K. Japp

Jim Jaster
 Jennie-O Turkey Store, Inc.
 JM Companies, Inc. & Mike Moores
 Dr. Byron L. & Joanne R. John
 John Morrell & Co.
 Bob & Judy Johnson
 Cindy Johnson
 Drs. Richard & Merryn R. Jolkovsky
 Angela Jordahl
 Dr. Donald J. Jurgens
 Roger & Susan Justison
 Kevin and Julie Johnson —
 K. Johnson Const. Inc.
 Terry & Barbara Kantor
 Michael & Joni Karl
 Mary Lou Kasella



Pat and Sandy Baldwin gave a \$100,000 gift for a new family lounge in the expansion of the CentraCare Heart & Vascular Center.

Judy Kassube
 KDV
 Rob & Joanne Keck
 Kehe Food Distributors, Inc.
 Keller Family Community Foundation
 Kempes
 Karen Kinsley
 Leigh & Steve Klaverkamp
 The Klick Foundation
 KLN Family Brands
 Susan & Greg Klugherz
 Knife River/MDU Foundation
 Luan Knoll

Duane & Kim Koepp
 Linus J. & Marina A. Koopmeiners
 Tami & Jason Koosmann
 Naomi Kowalik
 Amy Kramer
 Mark Krebsbach
 Tom (t) & Helen Krebsbach
 Al & Yvonne Kremers
 Dr. David A. & Susan M. Kroska
 David B. & Mary J. Kult
 Rebecca Kulzer
 Greg & Carla Kummer
 Aaron & Lisa Lahr Family
 Jerry & Bev Timmers Lahr
 Lamar Outdoor Advertising
 Land O' Frost, Inc.
 Peggy Lange
 Langers
 Martha & Steven Lanz
 Mark & Judi Larkin
 David & Camilla Larson
 Dr. Theresa M. & John Lau
 Jim & Mary Jane Lauerman
 Yvonne L. Leedahl
 Leighton Broadcasting Radio Stations
 KCLD, KZPK, KCML, KNSI
 Dr. Thomas W. & Deanne Leither
 Dr. Kurt R. & Cindy Lemke
 Scott & Lori Leonard
 Steven Letnes
 Hub Levandowski & Karol Moorman
 Aaron & Jill Levin
 Mary & Michael Leyk
 Cheryl Lightle & Wade Skaja
 Dr. David R. & Gretchen Lindgren
 Bonnie Line
 Ann M. Litchy Martinez
 Little Falls Orthopedics
 Shirley & Al (t) Loehr
 Long Prairie Packing
 Phil & Holly Luitjens
 Jim & Vicki Lundeen

Luther Honda of St. Cloud
 Patrick E. Lynch
 Virginia Ziebol Lyon
 Barbara Magnan
 Marjorie & Gerald Mahon
 Mahowald Insurance Agency
 & Mahowald Financial Partners
 Jim & Chris Mahowald
 John Mahowald & Donna Kuhl
 John P. & Maryanne Mahowald
 Malt-O-Meal Co.
 William P. Maney
 Marco, Inc.
 Diane L. Marcotte
 Mars Chocolate
 Gary & Jane Marsden
 Edward "Chip" Martin & William Chaffee
 Dr. Mark J. & Lisa B. Martone
 Dr. John & Joyce Matsuura
 Dr. Mark & Ronda Matthias
 Eileen Maus
 Mike Mavetz & Mary Beth Schmitt
 Scott & Mary Kay May
 Dr. Deborah L. McCarl
 John & Cherie McDowall —
 McDowall Company
 Drs. Eric T. & Lynn M. McFarling
 McGladrey LLP
 McGough — St. Cloud
 McGough Construction Company, Inc.
 Charles Meador
 Med Foods Inc.
 Medica Foundation
 Michael Meirick
 Dr. Cindy Jensen Melloy
 & Thomas P. Melloy
 Melrose Electric
 Darla & Brian Mergen
 Merrill Corporation
 Metropolitan Mechanical
 Contractors, Inc.
 Roy J. & Ruth Meyer

Stacy & Barry Meyer
MHA
Michael Foods
Douglas & Jane Mick
Mid Central Door Co.
Midsota Plastic
& Reconstructive Surgeons, PA
Alvina Mies
Bob & Deb Miller
MillerCoors
Minnesota Academy of Family
Physicians Foundation
Minnesota Academy
of Pediatrics Foundation
Minnesota Organization
on Fetal Alcohol Syndrome
André Mitchell
Mondolez
Morgan Family Foundation
Kathryn Morin
Morrison Healthcare Food Services
Morton Salt
Beverly Mueller
Multiple Concepts Interiors Carpet One
Mark & Jan Murphy
Musco Family Olive Co.
Myevent.com Inc.
Jim Nahan
Michael R. & Donna M. Nathe
Nationwide Life Ins. Co.
NativeX
Jaime Neff & Christi Alvord
Negen and Associates
Peter & Laurie Nelson
Dr. Benjamin & Kari Nemeth
Dr. Robert B. & Marianne Nemeth
Ruth M. Neron-Heiple
Nestle Nutrition
Nestle Purina Petcare
Nestle USA/Coffeemate Creamers
Myrel A. Neumann
Midwest Vision Center
New Flyer USA

Ryan & Mollie Newman
Hoang Nguyen, M.D.
and Regional Diagnostic Radiology
Debra L. Nielsen
Joshua & Melissa Longnecker —
Northwestern Mutual
Northwestern Mutual Foundation
Nudak Ventures LLC dba
Nucara Pharmacy
NXC Imaging
Ocean Spray
Old Dutch Foods Inc.
Old Orchard
Jayleen Olin
Donald J. Ollom
Troy & Gail Olson



Debbie Erickson (center), received the 2013 Spirit of Women Community Hero Award presented by Mark Larkin, CFRE, vice president, CentraCare Health, and Penny Beattie, DNP, RN, MBA, NE-BC, care center director, St. Cloud Hospital Women & Children's Services.

Tiffany Omann-Bidinger
Gerry & Carole Otto
Kurt & Linda Otto
Overhead Door of St. Cloud, Inc.
John & Elizabeth Packert/
Ron's Cabinets
Dr. Scott & Susan Palmer
Steven & Debra Palmer
Palmer Printing Company
Pan-O-Gold Baking Co.
Kathy & Jim Parsons
Troy & Sandra Payne
Justin V. Pearson Memorial Fund
Diane & Matt Pelant
Pennington & Cherne, PLLC

Drs. Ted & Jane Peterson
Luann Peterson
David & Mary Phipps
Brett & Jon Pinkerton
Dr. Terence & Sue Pladson
Joy & Patrick Plamann
Plaza Park Bank
Pope Architects, Inc.
Tom & Amy Porwoll
Jim & Denise Potter
Noel & Cindy Johnson —
Premier Real Estate
Quinlivan & Hughes, P.A.
Rahn's Oil & Propane, Inc.
Rapid Container Service, Inc.
Joni & Duane Rasmusson
Jane S. Reedal
Regional Diagnostic Radiology
Rachael Rein
James E. Reller
Robert & Rita Rengel
Bret & Nicole Reuter
Dr. Nathaniel & Valerie Reuter
Dr. Nicholas & Bernice Reuter
Danya Rice
Rice Building Systems, Inc.
Rieke Family
Denny & Karol Ringsmuth
Rinke Noonan, Ltd
Aleen & Rick Roehl
Trish & Jason Roehrl
Barbara Rogan
Deacon Kenneth W.
& Michele A. Rosha
Gary & Denise Rosin
Royal Tire
RSP Architects
Vickie & Al Ruegemer
Phil & Evelyn Ruggiero
Richard B. Ruhoff
Rural Health Alliance, LLC
Vern Salzi
Sand Companies, Inc.

Jack & Carol Ann Sander
Juli & John Sanner
Sargento Foods
Thomas and Cheri Satre
Marilyn A. Savage
Scenic Specialties Landscape Center
Scheels All Sports
Barb Scheiber
Jane Scherber
James & Joan Schlenner —
Schlenner, Wenner & Co.
Jim & Ann Schleper
Richard & Marlene Schlichting
Melanie & Christian Schmidt
Ronald S. & Irene E. Schmidt
Michael A. Schmidtbauer
Dr. John M. & Amy Schmitz
George & Nancy Schnepf
John & Jan Schnettler
David Schoenborn
Dr. Thomas G. & Myra Lee Schrup
Frank & Vicki Schrupp
Dr. Timothy N. & Amy Schuchard
Jimmy F. & Joanne R. Schultz
Mary Scott
SCR
Pat Seanger



The annual Grocers on the Green golf tournament, organized by Chris Coborn and Greg Kurr, has raised nearly \$1.6 million to support St. Cloud Hospital Pediatric Cancer Services.

SEI
Jeff Sell

Tom & Kathy Sellnow
 Bob & Sandra Sexton
 Joe & Kathy Sexton
 Ken & Marcia Shane
 Christopher Shorba
 Joseph & Valerie Silva
 Brenda & Randy Skarphol
 Drs. Kevin Smith & Angelina Ausban
 Randall Smith
 Smithfield Farmland Corp.
 Dr. Stephen (†) & Mary Sommers
 Joel & Jennifer Spalding
 Don & Sylvia Weeres & Family —
 Spee-Dee Delivery Service, Inc.
 Steve & Jean Sperl
 St. Boniface Church
 St. Cloud Ear Nose & Throat —
 Head & Neck Clinic, PA
 St. Cloud Floral
 St. Cloud Foot & Ankle Center, PA
 St. Cloud Hospital School of Nursing
 Alumni Association
 St. Cloud Hospital Volunteer Auxiliary
 St. Cloud State University
 St. Cloud Surgical Center
 St. Cloud VA Medical Center
 St. John's University
 State of Minnesota



Marco was the presenting sponsor for Holly Ball 2013. Pictured from left: Craig Broman, CentraCare Hospitals president; Jeff Gau, Marco CEO; Terry Pladson, MD, CentraCare Health president; and David Tilstra, MD, CentraCare Clinic president.

Stearns County
 Stearns Electric Association Trust

Todd & Cindy Steinke
 Stinson Leonard Street LLP
 Lori Stock
 Drs. Robert E. Stocker
 & Catherine A. Matuska
 Dr. Thomas J. & Ann L. Stone
 Gene & Bev Storms
 Streed Family LMTD Partnership
 Mary Struffert
 Stryker
 Debra D. & Donald H. Stueve
 Mary Super
 Dr. Muhammad Suri & Aqsa Nadeem
 Dr. Jessica & Andy Swartout
 Daniel Swenson
 Dr. Stephen Swenson
 Dr. Kevin & Linda Switzer
 Sy & Corrine Janochoski —
 Sy & Sons, Inc.
 Target
 Toni & Bryan Tebben
 Gregory Telste
 Dr. John Teskey & Kathleen Mahon
 The Catholic Foundation —
 Diocese of St. Cloud
 The Clara Foundation
 The Klick Foundation
 The Lynn Johnson Family Foundation
 The Mended Hearts Inc. — Chapter 10
 The Smile Train
 The St. Cloud Morning Optimist Club
 Louise E. Theisen
 Joleen & John Thell
 Thermo-Tech Windows
 East Side Glass Company
 Kenneth E. Thielman
 Third Street Brewhouse
 Scott & Maxine Thome
 Dr. Tracey B. Thompson
 Kelly Thomton
 Cathy & Brad Tieva
 Drs. David & Janet Tilstra

Times Media & St. Cloud Times
 TKI/Tom & Diane Kraemer Family
 George & Shirley Torrey
 Townsquare Media, Inc.
 Trinity Logistics
 Trudeau Distributing
 Delphine (†)
 & John Undersander Family
 Unilever
 United Way of Central Minnesota
 US Bank
 Marc & Heather Vaillancourt
 Kate VanBuskirk
 Linda Vanvalkenburg
 Vascular Solutions
 Dr. Timothy G. & Valerie Vedder
 Verizon
 Gary & Wendy Verkinnes
 Faber Family — Viking Coca-Cola,
 First Choice, Armada Coffee
 Patrick J. & Karen L. Virnig
 Molly Voigt
 Jane Vortherms
 Margaret S. & Leo N. Vos
 Walgreens Infusion Services
 Lewis R. & Patricia A. Walker
 Shar Wallack
 David & Dena Walz
 Gloria Warzecha
 Ryan & Melissa Weber
 Bruce & Jodie Gohmann —
 Weidner Plumbing & Heating
 Susan Weisbrich
 John & Mary Weitzel
 Wells Fargo Bank
 Jennifer Wenzel & Steven Johnson
 West Central Anesthesia PC
 Julia M. Westendorf
 Doris J. & Dani Westra
 Hugo & Rita Weyrens
 Brad & Kathy Wheelock
 Margaret & Michael White

Bob & Penny White
 Tom & Sonya Wieber
 Mary Lou Wilharms
 Wilkie Sanderson
 Dr. Darin D. & Katy Willardsen
 William and Betty Andres Foundation
 Dexter & Rosetta Williams
 Williams Dingmann Funeral Homes
 Keri Wimmer
 Greg & Beth M. Windfeldt
 Rosemary A. & Michael H. Windschittl
 Duane & Elaine Schultz —
 Winkelman Building Corporation
 Wipfli, LLP
 Karen M. Witzman
 Diane & John (†) Wojtanowicz/
 Prairie Farm Company
 Wolters Kluwer Financial Services
 Womens Golf Association
 Kevin & Debbie Wood
 Gary & Misty Woods
 Xcel Energy
 Xcel Energy Foundation
 Dr. Mohamed S. Yassin
 Todd & Kyoko Zaun
 Zero — The End of Prostate Cancer
 Daryl L. & Bonnie G. Zimmer
 Joseph Zimmer
 Steve & Sonja Zitur
 Zonta Club of St. Cloud
 Michael Zyvoloski
 20 Anonymous Benefactors
 Deceased (†)

Employee Campaign

These CentraCare Health employees participated in the 2014 Employee Campaign and are listed alphabetically by giving level. (As of June 30, 2014)

90-Minute LEADERS

Employees committed to 90 minutes per pay period.

Tom & Sally Allen
Bernice Anderson
Kathy Anderson
Kimberly Asmus
Larry L. Asplin
Christine & Jason Bakke
Troy Barrick
Roberta & Kevin Basol
Penny & Dennis Beattie
Kirstie & Peter Bingham
Travis & Nicole Bjerke
Ryan & Julia Bjerke
Sharon Blaskowski
Rona Bleess
Rebecca Bodien
Tom & Andrea Brasel
Lillian & Andrew Breen
Craig & Karen Broman
Dorothy Bromenshenkel
Laura Burns
Sheila E. Campbell
Janna L. Cannon
Linda & Joe Chmielewski
Laurie Christen
Karla & Mark Donlin
Vamsi Dwaram
Mike & Deb Eisenstadt
Ceree George
Jodi Gertken
Doug & Kay Greenlee
Marty & Jan Halvorson
Angelyn Harper

Lisa & Randy Harren
Paul & Jennifer Harris
Kayla Harrison
Joe & Amy Hellie
Justin Heurung
Jodi Hillmer
Ken & Beth Honkomp
Clayton & Christine Jacobson
Cindy Johnson
Bob & Judy Johnson
Angela Jordahl



Troy Payne, MD, and his wife, Sandra, enjoy themselves at Holly Ball, which raised \$550,000 for the St. Cloud Hospital Hospice Fund through the CentraCare Health Foundation.

Terry & Barb Kantor
Karen Kinsley
Susan & Greg Klugherz
Luan Knoll
Aaron & Lisa Lahr Family
Mark & Judi Larkin
David & Camilla Larson
Michelle Lattimer, RN, BSN
Mary & Michael Leyk
Jill Libbesmeier
Phil & Holly Luitjens
Sara & Randy Magwire
Jim & Chris Mahowald
Diane L. Marcotte
Dr. Mark & Ronda Matthias
Darla & Brian Mergen
Douglas Mick
Dennis Miley
Dawn Moen
Mark & Pat Mohr

Gwen Muehring
Troy & Gail Olson
Marlene V. Olson
Kurt & Linda Otto
Kathy & Jim Parsons
David & Mary Phipps
Dr. Terry & Sue Pladson
Joy & Patrick Plamann
Tom & Amy Porwoll
Grant A. Pulliam
Dawn Rasmussen-Graves
Melanie & Tom Rau
Kim Reichert
Aleen & Rick Roehl
Vickie & Al Ruegemer
Juli & John Sanner
John & Jan Schnettler
Mary Scott
Ken & Marcia Shane
Steve & Jean Sperl
Todd & Cindy Steinke
Lori Sterriker
Jennifer Storms
Debra D. & Donald H. Stueve
Daniel Swenson
Toni & Bryan Tebben
Joleen & John Thell
Marc & Heather Vaillancourt
Linda Vanvalkenburg
Molly Voigt
Jane Vortherms
Shar Wallack
Mary Ellen Wells
Jennifer Wenzel & Steven Johnson
Tom & Sonya Wieber
Lynn Wieczorek
Dexter & Rosetta Williams
Judy Woods
Steve & Sonja Zitur
11 Anonymous Leaders

60-Minute STEWARDS

Employees committed to 60 minutes per pay period.

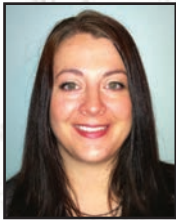
Linda Abel
Susan Baker
Lisa Baron
Mary Bell
Carol Belling
Dan, Andrew, & Anna Bender
Carla Biniek
Michael Borell
Gail T. Buermann
Karen & Mike Burzette
Del Christianson
Leenay Doll
April J. Doten
Jennifer Doyle
David Dunn
Shannon Durkee
Laura Erickson
Dianna Esplan
Misa Feldhege
Michele L. Fischer
Patricia Frie
Genell Goerger
Jenine Graham
Holly Haley
Kris Hammer
Michelle Hansen
Kimberly Hartman
Dennis Heinen
Kacey Hiltner
Debra Himsl
Heather Holte
Michelle Hutchins



"Any amount, any time, to anything you're passionate about makes a difference. Your contributions count and they matter."

Sack Insixiangmay,
Information Systems

Caroline Jacobs
 Naima Jama
 Sue Josewski
 Audrey & Dave Kamphenkel
 Marie Katterhagen
 Diane Keiser
 Tracy & Jim Ketzbeck
 Chris & Jamie Kipka
 Angie Klein
 Kari Kløver



"I am investing in my patients' care and playing a part to help provide the most recent, advanced technology, research and education to assist in advancing their care."

Jennifer Knaack,
 CentraCare Clinic – Becker

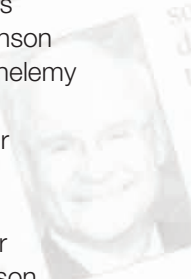
Carolyn & Randy Koglin
 Amy Kramer
 Sarah M. Kramer
 Angela Kray
 Nancee Kremers
 Carla A. Kroll
 Rebecca Kulzer
 Tamara Lambert
 Peggy Lange
 Yvonne L. Leedahl
 Sherry Lehnen
 Deb Libbesmeier, RN, CNP
 Judith L. Majerus LPN
 Lois A. Malek
 Nancy & Erich Martens
 Eileen Maus
 Nicole May
 Josh Moe
 Kathryn Morin
 Angie Moscho
 Mark & Jan Murphy
 Sheila Nahan
 GERALYN Nathe-Evans
 & Dave Evans(†)

Andrea Oelkers
 Tiffany Omann-Bidinger
 Jacqueline Osterhaus, PA-C
 Diane & Matt Pelant
 Cheryl Peters-Lewis
 Luann Peterson
 Howard Pierskalla
 Joni & Duane Rasmusson
 Kathy Rausch
 Pamela J. Richardt, RN
 Trish & Jason Roehrl
 Lyndsey Rosha
 Michele A. Rosha
 Jane Scherber
 Jason & Sarah Schindler
 Jan Schmiesing
 Tom & Kathy Sellnow
 Katie Signore
 Brenda & Randy Skarphol
 Shele Skelton
 Ann Marie Spanier
 Brenda Spoden
 Tami Stanger
 Lori Stock
 Hilary Studenski
 Mary Super
 Tiffany Tangen
 Kelly Thomton
 Cathy & Brad Tieva
 Drs. David & Janet Tilstra
 Tim & Cassie Tinius
 Kate VanBuskirk
 Diane Vogel, RN, BSN, OCN
 Andrea Voigt
 Colleen Walquist
 Mary Waltzing
 Karin Walz
 Gloria Warzecha
 Victoria Weah
 Patty Weller
 Paul M. Wenner
 Shannon Wenning

Keri Wimmer
 Penny Zimny
 Jody Zylstra
 28 Anonymous Stewards

30-Minute PATRONS
Employees committed
to 30 minutes per pay period.

Gail Aalderks
 Rebecca Ahlbrecht
 Mary Ahles
 Jessie Allen-Johnson
 Dean & Cindy Anderson
 Michelle Anderson
 Rachel Anderson
 Ron & Trina Anderson
 Laurie & Tim Annett
 Anita Arceneau
 Ronda K. Arnold
 Diane Asmus
 Victoria Atkinson
 Angela Barthelemy
 Julie Bartos
 Cheryl Bauer
 Tina Bauer
 Julie Baum
 Peggy Bayer
 Agnes Bearson
 Fr. Stephen Beauclair, OSB
 Beth Bechtold
 Kenneth Bechtold
 Mary Becker
 Melinda Bemis
 Marcia Bennett
 Renee Bernardy
 Riley Bertram
 Karrie Bestgen
 Daric & Melissa Birr
 Tiffany Bjorlin
 Heather Blais
 Donna Bloch



Lance Bollmeyer
 Amy Bong
 Sharon & David Borgert
 Monique Bork
 Julia A. Bourne
 Sarah Bown
 Jeannie Boyle
 Jeanie Bromenshenkel
 Julie Bunkowski
 Susan Burggraff
 Adam S. Burling
 Megan Call
 DaNell Carlson
 Joyce Chan
 Karen Chatterton
 Michelle Chmielewski
 Cmelik Family
 Paulette M. Como
 Donna Corrigan
 Lee & Jeni Croal
 Mary Croat
 Nancy Czech
 Joel & Alison Dahlin
 Tim & Lisa Dalton
 Carolyn Dadrick
 Jackie Defries
 Benjamin Dehn
 Anne Deters
 Lori Diederichs
 Joe & Jan Dirkes
 Linda Doerr
 Julia Draxten
 Toni Drum
 Patricia & Damien Dumonceaux
 Judith A. Dupré
 Dennis & Vera Ebensteiner
 Jody Eisenschenk
 Becky Elsenpeter
 Clare Elyea
 Kristi Enerson
 Summer Erdmann
 Barb Euteneuer

Tom & Gina Feldhege
Mary Filzen
Karla Fleming
Tammy Fluharty
Jim Forsting
Emily Foss
Brenda Foster
Melissa Fradette
Sheila Frank
Madolyn Freeman
Michele Freeman
Lynda Frenchick
Dale & Diane Gabrielson
Donna Gasperlin
Ron & Melanie Gedde
Katherine Geislinger
Johnna Gertken
Dawn Gibson
Eric Gohman
Ashley Gruber
Will Hagan
Sandy Haggerty
Patricia Haiby
Deb Hall
Sandy Hamilton
Michelle Hanneken
Brad & Lisa Hanson
Jane M. Harris
Patrick & Cathy Hartmann
Donna Hartung
Barb Hayes
Carrie Hayes
Michele Held
Patricia Helgeson
LeAnn Hellermann
Conni Henderson
Gloria Hendrickson
Daryl & Judy Henneman
Lynnette Hess
Sara Heurung
Trina Hinnenkamp
Erin & Adam Hjort

Rhondelle Hoggarth
Jessica Hollenkamp
Lindsay Hollenkamp-White
Hattie Holtberg
Gary & Nicole Holthaus
Heather Hooper
Robyn Huntley
Cortney Imdieke
Peter Imdieke
John & Brianna Inkster
Nicole Jacobson
Mary Janski
Jan Jaskowiak
Barb Johnson
Emmie Johnson, RN
Melanie Johnson
Paula Jungels
Shelly Kalthoff
Carrie Kampa
Kaelynn Kampa
Nancy Kampa
Donna M. Kamps
Matt & Alyssa Kangas
Wesley & Mandi Karls
Becky Kastanek
Kendra Keller
Sandy Keller
Lisa M. Kellner
Liz Kiffmeyer
Leigh & Steve Klaverkamp
Mary Klein
Tab Klimstra
Ron Klinkhammer
Bernice T. Klocker
Lori Kloth
Deborah Knoll
Mary Jo Koenig
Tami & Jason Koosmann
Pamela J. Kraker
Jennifer Krepp
Barb Krona
Jolene Krsiean

Teresa Krueger
Janet Kruzel
David & Season Kryzer
Corrine Labaw
Melissa Lahn
Sherri & Mike Liebl
Doris Lieser
Karen J. Lindgren
Dorothy Lindquist
Shirley Loehr
Melissa Lommel
Lisa Loso
Santina Lovelace
Jillene Lubbers
Steve Lungstrom
Vera Lwanga
Mary Macy
Jeffrey Magera
Julie Magera
Heather Marcyes, RN
Kathy & Mike Markman
Lucinda Martin
Philip & Mary Martin
Sue & Mike Martin
Deb Massey
Jane Mathiasen
Trisha Matvick
Bethany Maus
Tanya Mazzone
Terri McCaffrey
Michelle McDonald
Michelle McGraw
Dianna Mead
Anthony & Sara Meemken
Corene Merrill
Cassandra Meyer
John & Mary Kay Miller
Teresa Mohs
Mallory & Dan Mondloch
Deb Moritz
Beverly Mueller
Joy Mulder

Stephanie Munsch
Betty Munsterteiger
Claire Murphy
Julie Nacey
Clara Nathe
Joanne Schleper Nei
Amanda Nelson
Connie Ness
Holly Pary Ness
Ryan & Mollie Newman
Kathryn Nichols
Art & Elaine Niewind
Jeanine Nistler
Dan & Lori Norheim
Katie Beth Notch, RN
Carrie Oehrlein
Michele & Randy Olmscheid
Carla Olson
Vickie Olson
Laura Opgenorth
Erin Pallansch
Carrie Pantzke
Hyung Park
Tammy Parker
Deb & Doug Paul
Adam & Mindy Paulson
Joni Pawelk
Jennifer Peifer
Lacey Pesta
Marjorie Peternell
Owen & Marcia Peterson
Jamie Pettit
Kathleen Pflueger
Emily Piccerillo
Jacqueline Pooler
Audra & Tim Popp
Bruce & Margie Poser
Lori Potter
Melissa Pribyl
Janice K. Price
Carol Primus
Marty & Kelly Radi

Arlys Redden
 Bruce & Mary Ann Reischl
 Paul & Theresa Reisdorf
 Bret Reuter
 Nicole Reuter
 Laura Revering
 Jim & Janene Riedeman
 Denise Riedemann
 Luke Rieland
 Emily Ritter
 Sheryl A. Robinson
 Kayla Roelike
 Bridget Rogers
 Candace Rolfes
 Tim Rowen
 Bonnie Rozycki
 Paul & Becca Ruegemer
 Sharon Rueter
 Carla Rust
 David Sakariason
 Jonelle Saldana
 Merci A. Sand
 Cynthia Sandberg
 Lonnie Sandmeyer
 Barb Scheiber
 Ken & Mary Schimnich
 Gail Schmidt-Ziemer
 Lois Schmitt
 Pamela J. Schnettler
 Paul & Jennifer Schoenberg
 Ashley R. Schroeder
 Dr. Thomas G. & Myra Lee Schrup
 Steven Schrupp
 Trishia Schultz
 Katherine Schulz
 Sharon Ann Schwantz
 Jennifer Seifert
 Richard Seifert
 Joan Silbernick
 Ellen Simonson
 Wayne & Linda Skajewski
 Kirsten Skillings

Donna J. Slettom
 Brandon Smith
 Janice Smith
 Laura L. Smith
 Kristine Smoley
 Sandy and Dave Spoden
 Karen Staggert
 Tina Standfuss
 Linda Stanearth
 Barbi Stankey
 Patricia Starmer
 Sue Stein
 Linda Stepka
 Rachel Stoltz
 Craig & Carrie Stowell
 Gwen Sufka
 Ann Summar, RN, CNP
 Sandy Sutton
 Lorene Swenson
 Patricia Taft
 Curtis Tepley
 Allison M. Tetrault
 Robin & Dave Theis
 Michelle Thompson
 Sandy Thornton
 Beth Thorsten
 Melissa & Joel Torborg
 Dorothy Tripp
 Heather Trosdahl
 Jeanne Trullinger
 Jon D. Tufte
 Brenda Turner
 AnneMarie Vannurden
 Susan Volkman
 Chris Walker
 David & Dena Walz
 Nicole Wander
 Lisa Warner
 Marilyn & Dave Weber
 Marla Wegleitner
 Heidi Weinand
 Mary K. Weis

Libby Wenderski
 Joseph & Heidi Wendt
 Clare A. Wengert
 Betty Widmeier
 Dr. Darin D. & Katy Willardsen
 Jessica Williams
 Sherri & Kevin Winkelman
 Rachael A. Winter
 Mary Wood
 E. Woodman
 Nicholas Woods
 Bridgette L. Worlie
 Jackie Wruck
 Heather Yender
 Dawn M. Yilek
 Donna Yohnke
 Emily Zempel
 Ann Zierden
 Carla Zupko
 Karen & Terry Zwiener
 101 Anonymous Patrons
 Deceased (†)



Twins fan Millie enjoyed her first tailgate party outside of Koronis Manor Care Center, Paynesville.

Making dreams a reality!

When we asked resident Millie about her dream, it did not take much thought. She's a Minnesota Twins baseball fan and she wanted to have a tailgate party (outside of Koronis Manor). Millie was able to pick the menu, which included charcoal-grilled food and hazelnut ice cream. She was so excited to sit outside on a beautiful summer day with the game on in the background. She took it all in while fondly reminiscing about her past. Millie had never been to a tailgate party and was emotionally overwhelmed with gratitude and full of smiles! I think it is safe to say this is a day she will not forget.

~ Shared by a social worker at CentraCare Health – Paynesville

Dreams can come true

Thanks to the generosity of CentraCare Health employees, more than \$6,000 was raised for the CentraCare Health – Paynesville Koronis Manor Care Center's "Dream a Little Dream" program, which gives residents the opportunity to do something special they always have dreamed of doing.

The money raised plays a critical role in counteracting apathy and boosting self-confidence, which improves the residents' quality of life. Your gift allows residents to fulfill their dreams, making them feel truly special and creating joyful memories that may not exist without your generosity and support!

boards of directors & operating committees

CentraCare Health

David Agerter, MD
Michael Benusa
Christopher Coborn
Steven Laraway
Thomas Leither, MD
Terence Pladson, MD
Denise Rosin
Robert Stocker, MD
Joseph Uphus
Robert White
Mary Jo Williamson
Gene Windfeldt
Mohamed Yassin, MD

Term ended in 2014

Gary Marsden

CentraCare Clinic

David Agerter, MD
Fred Engman, MD
Donald Jurgens, MD
Patrick Lynch
David Roberts, MD
Denise Rosin
Sharon Ruggiero, MD
Christian Schmidt, MD
Robert Stocker, MD
David Tilstra, MD

Term ended in 2014

Byron John, MD
Keith Leavell, MD

CentraCare Health – Long Prairie Operating Committee

Pete Berscheit
Craig Broman
Chuck Eldred
Sally Hanson
David Petersen
Thomas Steinmetz
Dan Swenson
Rene Eldidy

Term ended in 2014

Don Hansen

CentraCare Health – Melrose Operating Committee

Craig Broman
Terri Ellering
Gene Enneking
Gerry Gilbertson
Corey Sand
Kurt Schwieters, MD

CentraCare Health – Monticello Operating Committee

Craig Broman
John Grubb
Sheldon Johnson
Brian Rupert, MD
Theresa Wagner
Mary Ellen Wells
Charles Yancey, MD, PhD

CentraCare Health – Paynesville Operating Committee

Robert Brauchler
Craig Broman
Howard Caldwell
Timothy Malling, MD
Dennis Miley
Kimberly Nelson
Daniel Rea

CentraCare Health – Sauk Centre Operating Committee

Tim Borgmann
Craig Broman
Delano Christianson
Benedict Haeg, MD
Jody M. LaVoi, PharmD
James Sayovitz, MD
Joe Uphus

St. Benedict's Senior Community Operating Committee

Teresa Bohnen
Darwin Bonn
Craig Broman
Mark Christianson
Linda Doerr

Beatrice Eynck, OSB
Nancy Ferche
Maureen Gaedy
Diane Hageman
Jacqueline Schuh

Term ended in 2014

Benedict Gorecki

St. Cloud Hospital

Teresa Bohnen
Craig Broman
Sarah Carter, MD
Christopher Coborn
Ron Hanson, MD
Kara Hennes, OSB
Mary Jackle, OSB
Father Thomas Knoblach
Devinder Malhotra
Maria Mallory, MD
Edward "Chip" Martin-Chaffee, MD
Cindy Jensen Melloy, MD
Melinda Sanders
Jim Schlenner
Chris Tacl, MD
Joan Barrett Volkmuth, EdD
Tim Wensman
Joan Wilcox, RN

Term ended in 2014

Paul Dorsher, MD
Steve Laraway
Thomas Wright

St. Cloud Hospital Corporate Members

Joanne Benson
Michaela Hedican, OSB
Bishop Donald Kettler
Joyce Matsuura
Nicholas Reuter, MD
The Very Reverend Robert Rolfes
Thomas Schlough
Marlene Schwinghammer, OSB

Term ended in 2014

Bishop John Kinney
Dave Noack

CentraCare Health Foundation

Barb Anderson
Stacia Anderson, MD
Douglas J. Boser
Craig Broman
Linda Feuling
Jeff Gau
Christy Gilleland
Janet Handrigan, MD
Brad Hanson
Elizabeth Hayden
Jean Juenemann, OSB
Mark Kranz
Mark Larkin
Mary Linnemann
John Mahowald
Carmie Mick
Terry Pladson, MD
Marc Sanderson
John Schmitz, MD
David Smith, MD
Kevin Smith, MD
Kimberly Spaulding, MD
David Tilstra, MD
Deb Vogt
Mary Weitzel
Gene Windfeldt

Term ended in 2014

Mark Coborn
Dwight Jaeger, MD
Wendy Verkinnes
Brad Wheelock

CentraCare CEO to retire in 2012

Pladson has had job since 1995



Terry Pladson

sole president of CentraCare since 2002, and shared presidency with John Frobenius beginning in 1995 when his clinic with St. Cloud

hospitals, nursing homes and senior apartments in six communities, and 17 clinics in the region. Pladson began his work in St. Cloud with Internal Medicine Associates as a pulmonologist in 1978.

CentraCare also operates specialty services such as the CentraCare Heart & Vascular Center, Coborn Cancer Center and the CentraCare Kidney Program.

Care Health's vision of being the leader in Minnesota for quality, safety, service and value," Pladson said in a statement.

Gene Windfeldt, chair of the CentraCare Health Board of Directors, said Pladson "has been an inspiration to the board and the entire organization through his commitment to the CentraCare mission, 'to improve the health of every patient every day.' He has been the right person at the right time for the CentraCare organization."

CentraCare Health - Maternity safety excellence

Family Birthing Center, which opened in June. "It's kind of our last piece of opening our new Family Birthing Center," Lahn said. "We've waited a long time ... and the space is just going to be so much better for patients and staff to work from."

worked hard to ensure we met our goals to obtain the Safe Site initiative. This includes, but is not limited to long time outs prior to a procedure. We have a great team, and we have a great facility. All

Private rooms

The center is in the 10-story addition to the hospital that was part of a \$23 million expansion that began in 2007. It is part of the hospital's Women and Children's Center, which also includes Pediatrics and the Neonatal Intensive Care Unit (NICU).

Registered Nurse Melissa Lahn said the unit opened. A separate wing for families. The triage unit aims to help patient should be hospitalized or go home.

INSIDE THE HOSPITAL'S OB TRIAGE UNIT

Six private rooms provide dedicated space for each patient and family

CentraCare or give back for employees

The employees at CentraCare have been wrapped up in the annual Campaign. Campaign support has been raised for the Employee Campaign on June 5.

back to the original CentraCare employees are of all the CentraCare employees are to have the highest percentage of participation. More than \$23,000 was raised for the Employee Campaign on June 5.



St. Cloud Hospital OB Triage Unit open

CENTRACARE Health
centracare.com

Gohman, who couldn't think

The Grey Eagle City Council

CentraCare gets grant